

HONG KONG SMART DESIGN AWARDS

香港智營設計大賞

2019



HONG KONG
SMART DESIGN
AWARDS





CONTENT 目錄

- 1 ORGANIZER & SERVICES
主辦機構及香港出口商會服務範圍
- 2 HKEA CHAIRMAN AND HKSDA
CONVENOR'S FOREWORD
香港出口商會會長 及 「香港智營設計大賞」召集人
序言
- 3 HONG KONG SMART DESIGN
AWARDS 2018 HIGHLIGHT EVENTS
「香港智營設計大賞」2018 焦點盛事
- 4 ABOUT HONG KONG SMART DESIGN
AWARDS
「香港智營設計大賞」簡介
- 5 AWARDS BUSINESS OPPORTUNITIES
獲獎營商機遇
- 6 JUDGING PANEL
評審團介紹
- 8 HKSDA ADVISORY COMMITTEE
智營設計大賞諮詢委員會
- 9 HKSDA ADVISORY COMMITTEE
CHAIRMAN'S REMARKS
「香港智營設計大賞」諮詢委員會主席的話

JUDGING CRITERIA – GIFTS, HOME &
HOUSEWARE
評審標準 – 禮品、家庭及家居用品



- 10 **CORPORATE GROUP – GIFTS**
公司組別 – 禮品

BABY & MOTHER CARE
母、嬰用品

CORPORATE PROMOTIONAL GIFTS
企業宣傳禮品

LEISURE AND TRAVEL
優閒及旅遊

OCCASIONAL & FESTIVAL
節慶禮品

PERSONAL ACCESSORIES
個人配襯禮品

WORKPLACE
工作研習
- 31 **CORPORATE GROUP –
HOME & HOUSEWARE**
公司組別 – 家庭及家居用品

DINING & PARTY
餐宴派對

KITCHEN
廚房用品

LIVING & HOME DÉCOR
起居生活及佈置

PET & PLANT CARE
寵物及植物護理

WELLNESS & PERSONAL CARE
保健及個人護理
- 48 HKSDA ADVISORY COMMITTEE
CHAIRMAN'S REMARKS
「香港智營設計大賞」諮詢委員會主席的話

JUDGING CRITERIA – TOYS & GAMES
評審標準 – 玩具及遊戲產品

AWARDED ENTRIES 得獎作品

- 49 **CORPORATE GROUP – TOYS & GAMES**
公司組別 – 玩具及遊戲產品

0 - 36 MONTHS
0 - 36 個月

3 - 8 YEARS
3 - 8 歲

8+ YEARS
8 歲或以上
- 58 BREAK THE COCOON – SPARKLING
HONG KONG 2019
「破繭而出，閃耀香港」2019
- 60 **CONCEPTUAL GROUP**
概念組別

HKSDA PROJECT MANAGEMENT TEAM'S
PREFACE
「香港智營設計大賞」項目監管的話

CREATIVE INDIVIDUAL DIVISION
獨立創意組

STUDENT DIVISION
學生組
- 71 SPONSORING & SUPPORTING
ORGANIZATIONS
贊助及支持機構
- 72 ACKNOWLEDGEMENT & PROJECT TEAM
鳴謝及項目團隊

ORGANIZER & SERVICES

主辦機構及香港出口商會服務範圍

ORGANIZER

- The Hong Kong Exporters' Association (HKEA) is a non-profit making trade association registered under the Hong Kong Companies Ordinance in May 1955 as a company limited by guarantee.

VISION

- To be the Leading Organization to Develop Hong Kong as a Trading hub for Exporters.

MISSION

- To Serve Hong Kong Exporters
- To Add Value for Members

CORE VALUE

- Service-Oriented
- Export Centric
- Apolitical

SERVICES

- To liaise with government and represent the interests of exporters on a number of important councils and committees.
- To assist members to explore new market opportunities & to keep abreast of latest market intelligence by organizing seminars, luncheons, trade missions and exhibitions.
- To disseminate information through exporters PLUS to help exporters gain additional exposure via online product promotion and searching services.
- Other services include business matching, trade enquiries, organizing social responsible and community activities as well as initiating different projects or studies to promote HK export trade and to enhance its competitiveness.

主辦機構

- 香港出口商會乃於 1955 年 5 月依香港公司法註冊為有限負債的非牟利商會團體。

企業宏圖

- 致力為出口商發展香港成為貿易的中樞。

使命

- 為香港出口商服務
- 為會員增值

核心價值

- 以服務業界為主
- 以出口貿易為中心
- 政治中立

服務

- 本會不時與政府聯繫，並藉代表參與多個香港官方或非官方的機構團體為香港經貿作出貢獻。
- 籌辦研討會、商務聚會、商貿考察團及展覽會等，以協助會員拓展業務，掌握最新市場資訊。
- 透過《出口商快訊》發放最新的本地與國際貿易資訊，並為出口商提供網上產品展示及搜尋服務以作額外宣傳。
- 其他服務包括商貿配對、貿易諮詢、籌辦社會服務和公益活動，與及倡議不同項目或研究以進一步推廣香港之出口貿易和提升競爭力。

Address : Room 924, Star House, 3 Salisbury Road, Tsimshatsui, Kowloon, Hong Kong
地址 : 香港九龍尖沙咀梳士巴利道三號星光行 924 室

T +852 2730 9851
F +852 2730 1869

E hkea@exporters.org.hk
W www.exporters.org.hk



HKEA CHAIRMAN AND HKSDA CONVENOR'S FOREWORD

香港出口商會會長 及「香港智營設計大賞」召集人 序言

The Hong Kong Exporters' Association (HKEA) has been devoted to support Hong Kong exporters in exploring their business opportunities, enhancing their market value and recognition. In order to strengthen the competitiveness and stand out in the rapid changing global economy, "Hong Kong Smart Design Awards" (HKSDA) has motivated local manufacturers and exporters to achieve the business strategy of "Design x Strategy x Technology = Smart Business" by incorporating various elements for breakthrough in development. In addition, it has led and cultivated local design talents into the design market.

Following the success of HKSDA, HKEA has been developing other 2 on-going projects since 2018. With the support from the "Dedicated Fund on Branding, Upgrading and Domestic Sales" (BUD fund) under the Trade and Industry Department, we are showcasing awarded products in Beijing, Shanghai and Shenzhen and help exporters to explore market potential in China under the program of "Sparkle Hong Kong Smart Designs to China" (SHKSD). In 2018, HKEA organized the first edition of Asia Exhibition of Inventions Hong Kong with Palexpo, Switzerland, organizer of Geneva Inventions, to unveil the inventions from Asia to the world. These 3 programs are not independent ones, but interrelated, from creating innovative and unique ideas, formulating product design and marketing strategy, exploring new market opportunities to enhance the competitive position of Hong Kong exporters as ultimate goal.

Last but not least, with the support to the above 3 programs, I would like to extend my sincere gratitude to all participants, especially HKSDA's major sponsor "CreateHK" and our partners for their dedicated support. We will continue to keep up our work and carry out the spirit of HKSDA for continuous success.

香港出口商會致力推動出口與設計業變革發展，為香港出口商拓展商機及提升市場價值。我們洞悉要在急速轉變的環球經濟和競爭激烈的市場中保持優勢，「香港智營設計大賞」（簡稱智營大賞）成功推動本地製造商和出口商提升營銷策略，以達至「設計 x 策略 x 科技 = 智營之道」的商業戰略。此外，亦成功帶領和培養本地設計人才進入設計市場。

自「智營大賞」取得成功後，我們在 2018 年開始推動其他兩個項目 - 工業貿易署的「發展品牌·升級轉型及拓展內銷市場的專項基金」資助下，開展「閃躍·香港智營設計在中國」項目，在北京、上海和深圳展示獲獎產品，幫助出口商開拓中國潛在的市場。香港出口商會與瑞士日內瓦國際發明展覽會主辦機構 Palexpo 合作，於 2018 年舉辦首屆亞洲發明展覽會，向世界展示亞洲的發明。這三個不是獨立的項目，而是相互關連的，以創意、創新和獨特的概念，制定產品設計和營銷策略，並探索新的市場機會，提升出口商在環球市場的競爭力及機遇為目標。

最後值得一提，在該三項計劃獲得各界的支持下，本人衷心感謝所有參與者，「智營大賞」的主要贊助 - 「創意香港」，以及其他合作夥伴，感謝他們的全力支持。我們會繼續努力，秉承大賞的精神，不斷取得成功。



Benson Pau

BENSON PAU
Chairman, HKEA
Project Convenor, HKSDA

鮑潔鈞
香港出口商會會長
「香港智營設計大賞」召集人

HONG KONG SMART DESIGN AWARDS 2018 HIGHLIGHT EVENTS

「香港智營設計大賞」2018 焦點盛事



Awards Celebration Ceremony
(Home & Houseware) and
Networking Reception of HK
Houseware Fair
家庭及家居用品得獎作品慶祝
儀式暨「香港家庭用品展」交
流酒會



Kick-Off Seminar
啟動研討會



Awards Celebration Ceremony
(Gifts) cum Networking
Reception of HK Gifts &
Premium Fair
禮品得獎作品慶祝儀式暨「香
港禮品及贈品展」交流酒會



Adjudication
作品評審

Awards Presentation Ceremony and Press Conference 頒獎典禮及傳媒發佈會





ABOUT HONG KONG SMART DESIGN AWARDS

「香港智營設計大賞」簡介

With the continuous support by the HKSAR Government under the "CreateSmart Initiative" (CSI) of "CreateHK", the "Hong Kong Smart Design Awards" (HKSDA) organized by The Hong Kong Exporters' Association has celebrated its 8th anniversary in 2019. Under the program of CSI, "CreateHK", HKSDA has further facilitated Hong Kong exporter's transformation development, fosters the industry connections and nurture design talents to enhance their competitiveness and value local designs.

Reflecting the needs of creativity driven market and the support from the industry, we have nearly 350 participants from both Corporate and Conceptual Group with 15% growth this year and received almost 550 entries in total.

Differ from other design competitions, awarded products will be brought to the international spotlight, showcase at local as well as overseas trade exhibitions including Hong Kong Houseware Fair, Hong Kong Gifts and Premium Fair, DesignInspire, Trade and Industry Tower, Times Square, Lifestyle Expo Tokyo in Japan and Ambiente, Frankfurt in Germany. Through such opportunities, awardees can unveil their creativity and design ideas to explore potential business. In addition to business development, awardees will be nominated to participate in the Designers' Inspiration Trip under the project of "Break the Cocoon, Sparkling Hong Kong" with government sponsorship. It aimed to unleash awardees' creative potential via this refined business exchange program to advance further in their career.

Over the years, the Awards are recognized locally and internationally with market's greatest appreciations. It will continue to motivate and assist more product industries to encourage enterprises to make advancements and excel their capabilities in establishing Hong Kong as an Asian design product sourcing hub in long run.

MISSION

- To encourage OEM to ODM and OBM transformation
- To build Hong Kong as an Asian design product sourcing hub
- To nurture design talents
- To enhance awareness of Hong Kong smart design in locally & internationally

在香港特區政府「創意香港」創意智優計劃的支持下，香港出口商會於 2019 年慶祝成功舉辦第 8 屆「香港智營設計大賞」(簡稱智營大賞)。進一步推動香港出口商的轉型發展、促進行業聯繫、培育設計人才，提升本土設計競爭力及重視本土設計。

在市場對創新的需求及業界的支持下，我們有近 350 名參與者來自公司組別和概念組別，令「智營大賞」2019 的報名人數增加 15%，共收到多達 550 件參賽作品。

「智營大賞」與其他設計比賽不同，得獎作品將成為國際矚目的焦點，於多個本地和海外的貿易展覽展出，包括香港家庭用品展、香港禮品及贈品展、DesignInspire、工業貿易署、時代廣場、東京國際禮品採購展和德國法蘭克福國際春季消費品展。通過這些機會，得獎者可以展示他們的創造力和設計理念，以探索潛在的業務。除了業務拓展外，選定的得獎設計師會獲政府資助參與「破繭而出，閃耀香港」計劃之「設計師啟發之旅」，通過商業交流計劃啟發其創造潛力，從而取得更大的成功。

多年來，大賞已在本地和國際上得到認同，並獲得市場的讚賞。它將繼續鼓勵和協助更多產品行業提升競爭力，發揮其卓越的能力，以建立香港作為亞洲設計產品採購中心為遠景。

使命

- 鼓勵由「原廠製造」轉型為「原創設計」及「原創品牌」
- 打造香港成為亞洲設計產品的採購樞紐
- 培養人才
- 提升本地及國際對香港設計及創新能力的關注

AWARDS BUSINESS OPPORTUNITIES

獲獎營商機遇

AWARDED PRODUCTS ROVING EXHIBITIONS 得獎作品巡迴展覽



Hong Kong Houseware Fair
香港家庭用品展



Hall of Design Tokyo, Lifestyle Expo Tokyo
東京國際禮品採購展 @ Design Tokyo 館



Hong Kong Gifts & Premium Fair
香港禮品及贈品展



Hall 11.1, Ambiente Frankfurt
法蘭克福春季消費品展 @11.1 館



Trade and Industry Tower
工業貿易大樓



Covered Plaza, Times Square
時代廣場 @ 地面展覽廳



DesignInspire

JUDGING PANEL

評審團介紹

- 1 Mr. Ivan TING**
Honorary Chairman,
The Hong Kong Exporters' Association
Executive Director, Kader Industrial Company Limited
丁天立先生
香港出口商會名譽會長
開達實業有限公司執行董事
- 2 Mr. Roger SWALES**
Founding Partner, GRO Design
GRO Design 創辦人
- 3 Prof. Eric YIM, JP**
Chairman, Hong Kong Design Centre
嚴志明教授 JP
香港設計中心董事會主席
- 4 Ms. Alice LAI**
Executive Director,
LF Asia Direct, Li & Fung (Trading) Ltd.
黎貞潔女士
利豐集團 LF Asia Direct 執行董事
- 5 Mr. Richard W.R. SPICER**
Senior Director of Product Planning
WOWWEE Group Limited

- 6 Prof. Leslie CHEN, JP**
Dean, Faculty of Design and Environment,
Technological and Higher Education
Institute of Hong Kong (Thei)
陳弘志教授 JP
Thei 設計與環境學院院長
- 7 Mr. Gary MAN**
Chief Designer, Bumblebee Studio
文英耀先生
大皇蜂工作室首席設計師
- 8 Ms. Nicolette NAUMANN**
Vice President, Ambiente and Tendence
Messe Frankfurt Exhibition GmbH
璫嫻女士
德國法蘭克福展覽有限公司副總裁
德國設計獎評委會成員
- 9 Prof. Wenqing YANG**
Associate Professor, College of Design &
Innovation Tongji University, China
Vice President, Shanghai Industrial
Design Association
楊文慶教授
同濟大學國際設計創意學院教授
上海工業設計協會副會長

- 10 Mr. Brian SUN**
Vice Chairman, The Hong Kong Exporters' Association
CEO, Technical International Holdings Ltd.
孫騰章先生
香港出口商會副會長
Technical International Holdings Ltd. 行政總裁
- 11 Mr. Tommy LI**
Creative Director, Tommy Li Design Workshop Ltd.
李永銓先生
李永銓設計有限公司創作總監

- 12 Mr. Ron LEUNG**
Past Chairman, Hong Kong Designers Association
梁昆剛先生
香港設計師協會前主席
- 13 Mr. Arthur CHAN**
Past President, The Toys Manufacturers'
Association of HK
Founder, Unimax Toys Limited
陳文先生
香港玩具廠商會前會長
友義玩具有限公司創辦人

- 14 Mr. Johnny MUI**
Regional Divisional Merchandise Manager
Core Toys, E&E, Seasonal & Impulse
Toys"R"Us (Asia) Limited -
A Joint Venture with Fung Retailing
梅象年先生
Toys"R"Us - 馮氏零售合營公司
高級區域部門經理 - 採購
男孩、女孩、戶外、
合家歡及電子產品玩具

- 15 Mr. Elmond CHEUNG**
Vice President, city'super Brand
City Super Group
張恆傑先生
City Super 集團 city'super 品牌
副總裁



HKSDA ADVISORY COMMITTEE

智營大賞諮詢委員會



IR. Dr. Alfred TAN
陳慶忠博士、工程師
Hong Kong Baptist University
香港浸會大學

Head of Knowledge Transfer Office
知識轉移處主管



Mr. Daniel CHAN
陳光耀先生
Hong Kong Design Institute (HKDI)
香港知專設計學院

Head, Department of Architecture, Interior & Product Design
建築、室內及產品設計系主任



Mr. Spencer FUNG
馮裕鈞先生
The Hong Kong Exporters' Association
香港出口商會

General Committee Member
理事



Mr. Ron LEUNG
梁昆剛先生
Hong Kong Designers' Association
香港設計師協會

Past Chairman
前主席



Mr. Vincent MA
馬偉雄先生
The Hong Kong Exporters' Association
香港出口商會

Chairman HKSDA Advisory Committee, Toys & Games
智營大賞諮詢委員會主席 (玩具及遊戲產品) 及香港出口商會副會長



Mr. Ivan TING
丁天立先生
The Hong Kong Exporters' Association and Hong Kong Toys Council
香港出口商會及香港玩具協會

Honorary Chairman of HKEA
Vice Chairman of HKTC
香港出口商會名譽會長
香港玩具協會副會長



Mr. Bryant CHAN
陳允誠先生
Hong Kong Toys Council
香港玩具協會

Executive Committee Member
執行委員會成員



Mr. Brian SUN
孫騰章先生
The Hong Kong Exporters' Association
香港出口商會

Chairman, HKSDA Advisory Committee, Gifts, Home & Houseware
智營大賞諮詢委員會主席 (禮品、家庭及家居用品)
香港出口商會副會長



Mr. Fai LEUNG
梁振輝先生
Industrial Designers Society of Hong Kong
香港工業設計師協會

President
會長



Mr. Dewitt CHIK
植觀賢先生
Low Carbon Design Society of Hong Kong
香港低碳設計協會

President
會長



Mr. Roger NGAN
顏志永先生
The Hong Kong Exporters' Association
The Toys Manufacturers' Association of Hong Kong
香港出口商會及香港玩具廠商會

General Committee Member of HKEA
Vice Chairman of TMHK,
香港出口商會理事
香港玩具廠商會副會長



Mr. Benson PAU
鮑潔鈞先生
The Hong Kong Exporters' Association
香港出口商會

Chairman, HKEA Project Convenor of HKSDA
香港出口商會會長及智營大賞召集人



Mr. Sonny CHOY
蔡業康先生
Technological and Higher Education Institute of Hong Kong (Thei)
香港高等教育科技學院

Assistant Professor Dept. of Design, Faculty of Design Environment
環境及設計學院設計系助理教授



Mr. YM TAM
譚裕民先生
The Toys Manufacturers' Association of Hong Kong
香港玩具廠商會

Past President
前會長

* 排名不分先後 IN NO PARTICULAR ORDER

GIFTS, HOME & HOUSEWARE
禮品、家庭及家居用品

TOYS & GAMES
玩具及遊戲產品

HKSDA ADVISORY COMMITTEE CHAIRMAN'S REMARKS

「香港智營設計大賞」諮詢委員會主席的話

We are proud to announce that 84 awarded products were selected from nearly 550 entries this year, in which almost 80% of them are from corporate group and other over 20% are from conceptual group respectively. To highlight, 1 particular awarded product as the Gold winner of "Kitchen" group and also won the "Best of the Year" award as well as 3 judge awards given by the panel. Meanwhile, another 2 entries from "Corporate Promotional Gifts" and "Occasional & Festival" received 3 awards.

Reflecting on recent market, we've notice the growth of pet & plant care field, thus we introduced a new product group named "Pet & Plant Care" in "Home & Houseware" category this year. Many new entrants were being drawl. As expected, the Awards will continue to grow to include more industries practitioners and expand their development.

The group of "Leisure & Travel" was a hit in HKSDA 2019, accounting 27% of "Gifts" category. In particular, the growth of "Living & Home Décor" group has been remarkable, which contributed 35% of the "Home and Houseware" category. This indicated the market trend towards living products.

In the coming future, all advisory committee members will continue supporting HKSDA. Together, we eager to explore more development opportunities for local companies and design talents.

我們很高興地宣布今年我們有收到近 550 份參賽作品，一共有 84 份作品獲獎，而當中的得獎作品約 80% 是來自公司組別，概念組別則佔超過 20%。值得一提的是「廚房用品」產品組別的金獎得獎作品同時贏取了「年度最佳大獎」及 3 個「評審團大獎」。另外，2 件「企業宣傳禮品」及「節慶禮品」的作品亦分別榮獲 3 個大獎。

為因應市場發展，今年我們首次於「家庭及家居用品」類別中新增了「寵物及植物護理」產品組別，以吸納更多本地設計人才，增闊他們的發展出路。

「休閒及旅遊」乃今屆熱門產品組別，佔「禮品」類別中總參賽作品的 27%；特別是「起居生活及佈置」產品組別的增長非常顯著，佔「家庭及家居用品」類別的 35%。這說明產品市場的趨勢，越來越重視家庭及家居用品的需求。

在未來，我與諮詢委員會各成員會繼續協助大賞，一起致力開拓更多發展空間予香港公司及各設計才俊。



BRIAN SUN

Chairman, HKSDA Advisory Committee,
Gifts, Home & Houseware
Vice Chairman, HKEA

孫騰章

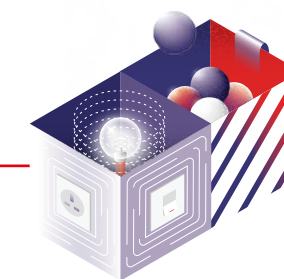
「香港智營設計大賞」禮品、家庭及家居用品諮詢委員會主席
香港出口商會副會長

JUDGING CRITERIA

評審標準

GIFTS, HOME & HOUSEWARE
禮品、家庭及家居用品

Marketability 商業性
Uniqueness 獨特性
Function 功能性
Product Aesthetic 產品外觀
Eco Friendliness 環保性





GIFTS 禮品

BABY & MOTHER CARE
母、嬰用品

CORPORATE PROMOTIONAL GIFTS
企業宣傳禮品

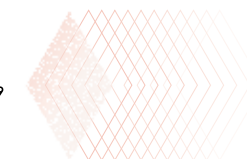
LEISURE AND TRAVEL
休閒及旅遊

OCCASIONAL & FESTIVAL
節慶禮品

PERSONAL ACCESSORIES
個人配襯禮品

WORKPLACE
工作研習

FINGER TOOTHBRUSH 指套牙刷



"Finger Toothbrush" is mummy's good helper. Made with DuPont soft bristles, each soft head is polished and will not irritate the gums, aimed to provide a gentle oral care for your baby. Its handle is soft and made of food grade silicone that is safe for your baby. The finger sleeve is firmly attached to the second joint of your finger. A small brush head with a flexible bending feature makes it easy for brushing and cleaning every corner.

「指套牙刷」是媽媽的好幫手。採用杜邦絲柔軟細刷毛，每根軟毛頭都經過打磨處理不刺激牙齒牙齦，溫柔呵護寶寶的口腔。它的刷柄柔軟，並採用食品級矽膠製成，非常安全及適合幼兒使用。指套與手指第二關節處穩貼合，靈活彎曲，且刷頭小巧，更易清潔死角及刷遍口腔各個角落。



Company 公司: Well Link Textiles Group Limited Website 網頁: www.themdbfamily.com



Designer 設計師
David LEUNG

With 13 years of experience in baby products' design and marketing, he is dedicated to design and develop unique and popular baby care products. 擁有長達 13 年的嬰童產品設計及推廣經驗，致力研發和設計別緻又受歡迎的嬰童護理產品。

MUSICTUNE TEETHER 寶貝音樂骨傳牙膠



It's made of FDA-certified food-grade silicone raw materials. The design is based on the principle of bone conduction technology and the music can be transmitted "directly" to the ear when the baby bites the 'Teether', in order to minimize the discomfort from teething. The electronic components are built in and well wrapped to avoid touching by the baby. With utility patent in China and certified under ASTM F963-17 in US, it is designed for parents who care about the growth of the first deciduous teeth of their baby.

「寶貝音樂骨傳牙膠™」適用 4 個月或以上的嬰兒，它採用美國 FDA 認證食品矽膠原材料，利用骨傳導技術原理，在寶寶在咬牙膠時通過牙齦組織“直接”傳送音樂到耳朵裡，可以減緩寶寶出牙期帶來的不適感。內置電子元件避免嬰兒接觸到；設計擁有國家實用新型專利，並且獲得美國 ASTM F963-17 安全認證。它專為關心嬰兒乳齒生長的父母而設計。



Designer 設計師
Edén YOU 遊陳喜

Edén You was majored in electronic information engineering with more than 10 years of experience in the development of electronic products and engaged in the electronic toy industry. Edén 主修電子信息工程學，一直從事電子玩具行業，並在電子產品開發方面擁有超過十年的經驗。



Designer 設計師
William LEUNG 梁方華

William has been providing original design and product development management services to a number of multinational companies since 1989. 自 1989 年以來，William 一直為多家跨國公司提供原創設計和產品開發管理服務。

Company 公司：Good Shine Development Ltd.

Website 網頁：www.wahshing.com

Awarded by 嘉許者：**Mr. Ivan TING**



INFANT ACTIVITY TRACKER 寶貝睡眠追蹤寶™



The tracker is like a guard to monitor the sleep of your 0 to 24-month-old infant. It installed with a wireless data collector and a Wi-Fi base station that you can track your baby's skin temperature, heart rate, sleep posture and depth of sleep remotely. The base station can also be used as a battery charger and it is a perfect design for working parents, who can monitor the sleep of their infant, even away from home.

「寶貝睡眠追蹤寶™」適用 0 至 24 個月的寶寶。它充當監控嬰兒睡眠的守衛，收集重要信息，例如：皮膚溫度、心率、睡眠姿勢和睡眠深度。它亦有一個無線採集器和一個 Wi-Fi 基站，通過家中 WiFi 路由器，讓不在家的父母能遠程追蹤；其基站也充當本產品的充電器。忙碌工作中的父母亦可隨時監測嬰兒的睡眠情況。



Designer 設計師
Thomas CHEUNG 張健華

Was graduated with major study in Management System Science, devoted to product design, UI/UX design and project management in consumer electronics industry for 20 years. 主修系統管理科學，20 年來一直致力於電子產品行業專注產品設計、UI / UX 設計及項目管理。

Company 公司：
Good Shine Development Ltd.

Website 網頁：
www.wahshing.com

GIGI BABY 360° TRAINING TOOTHBRUSH 盞盞 360° 嬰兒握力訓練牙刷



Designer 設計師：**David LEUNG**
Company 公司：Well Link Textiles Group Limited
Website 網頁：www.themdbfamily.com

Differs from other similar products in the market, its U-shaped non-slippery handle design is precisely fits toddler's small hand and to exercise toddler's gripping power at the same time. To address the safety concern, it particularly designed with a throat protective ring to avoid hitting toddler's throat.

「盞盞 360° 嬰兒訓練牙刷」採用 U 形防滑手柄設計，更貼合寶寶的小手，同時可以鍛煉寶寶的握力。更特別設計了一個喉嚨保護環可以避免撞到寶寶的喉嚨；專為正在開始學習如何刷牙的寶寶而設計。



GROWTH CHECK CHANGING PAD 寶貝成長墊



Designer 設計師：**William LEUNG 梁方華**、
Thomas CHEUNG 張健華
Company 公司：Good Shine Development Ltd.
Website 網頁：www.wahshing.com



'The Growth Check Changing Pad' is suitable for babies up to 12-month-old. The shape deliberately follows the traditional diaper changing table. Soft and safe materials are used to create a comfortable and safe feeling for baby. It can also collect the data of baby's weight and height as well as to record the number of diaper used during the change. The pad has a built-in Bluetooth BLE transfer module that can connect to smartphone and tablet applications to provide additional information, such as the growth charts of the WHO to compare with your baby's.

「寶貝成長墊」適合初生至 12 個月的嬰兒使用，產品外形刻意地遵循傳統的尿布更換台。採用柔軟及安全的物料，讓初生嬰兒在舒適安全的成長墊更換尿布，同時記錄嬰兒的體重、身高數據及在成長中記錄更換尿布的次數。成長墊內置了藍牙 BLE 傳輸，能直接與智能手機及平板電腦連接，提供成長資料，例如比對世衛的成長圖表。

MASHER SPOON & BOWL SET



Designer 設計師：**Jennifer KO**
Company 公司：Gift Concept Products Limited
Website 網頁：www.marcusmarcus.com

It's a feeding set of 2-in-1 masher spoon and masher bowl with a convenient single step process designed for starting baby on solid. You can mash up fruits and vegetables in a jiffy, flip the spatula and start feeding your toddler! The tip of the feeding spoon is made of soft silicone and is gentle on tender gum.

這套食物處理器專門為剛嘗試輔食的幼兒而設，加固初期進食的份量較少，這套裝能將小量的水果和蔬菜壓成蓉。勺子的一端是壓蓉器，另一端是餵食勺，反過來即可餵食，既方便又快捷。柔軟材質的餵食勺末端能呵護幼兒的牙齦。



FINALIST
入圍作品MARCUS & MARCUS BABY TEETHING
TOOTHBRUSH

MARCUS & MARCUS 嬰兒矽膠牙刷

Designer 設計師 : **Jennifer KO**

Company 公司 : Gift Concept Products Limited

Website 網頁 : www.marcusnmarcus.com

SOFT MUG

梳乎杯

Designer 設計師 : **David LEUNG**

Company 公司 : Well Link Textiles Group Limited

Website 網頁 : www.themdbfamily.com3D MESH BABY MATTRESS WITH
PILLOW SET

3D 透氣嬰兒床墊配枕頭

Designer 設計師 : **Abira CHAN 陳嘉倫****Raymond CHEUNG 張堃 • Flora LI 李方園**

Company 公司 : Smart Creations Company Limited

Website 網頁 : www.aboutsmartcreations.comWATERCOLOUR COLLECTION
MINI SHOESDesigner 設計師 : **Conny WIRYAWAN**

Company 公司 : Pepper and Mint

Website 網頁 : www.pepperandmintboutique.com“LOVE YOUR AGE”
BOOK-SET HAMPER
“LOVE YOUR AGE”
娃娃禮品套裝

A book-set designed exclusively for Lancôme, which includes a series of gift items in order to accentuate the value of its hero skin care product and to entice its target audience into trying it. Thoughtfully designed to provide a whimsical and culturally inspired encounter, the set is visually vibrant and impactful. French and chic, the set includes books, a mini flip-book and a doll - all in a blue, red and white theme. The main gift and illustrated flip-book are contained in one of the three books, surprising and delighting recipients upon discovery. The flip-book provides a particularly visual journey of the key product message “Love your age”. All the components complement each other to create a positive impression and a lasting reminder of love and self-confidence.

專為 Lancôme 設計的禮品套裝，當中包括書籍、迷你插圖書和娃娃，主色以藍色、紅色和白色搭配組合，帶出其法式及時尚的風格。迷你插圖書展現了品牌產品的中心理念 - 盼望女性無論在任何年齡都可活得漂亮及精彩。別出心裁地把插圖書及品牌的產品藏於其中一本書藉當中，再伴隨著巴黎娃娃，增添了整份禮物的驚喜及喜悅感。



Designer 設計師

Helena CHIU 趙婉玲 • Karen LAM 林嘉慧 • Anneliese HUI 許安怡

A team with over 10 years' experience, specializing in illustrations, product and packaging design, material sourcing, knowledge in production, delegated to offer appropriate and premium branding solutions.

一個具十年以上經驗的團隊，從策劃概念、物料採購、產品及包裝設計至生產的知識，務求為客戶提供優質及適切的禮品方案。

Company 公司 : DaDa Group Limited Website 網頁 : <http://www.dadagroup.com.hk/>

WALK&GO



Company 公司：
Ming Chi Printing

Awarded by 嘉許者：
Prof. Wenqing YANG

'Walk&Go' is a personalized replaceable rubber foot made from 100% recyclable thermoplastic elastomer based on participatory design research with Social Welfare Department. The design is flexible and requires less energy for the turning process and is easy to use. The distinguishing colors prevent from mixing up with others and it can be changed into a hiking stick version. This is a flexible and cost effective solution to address the needs of elderly.

'Walk&Go' 是一款設計個人化可更換的橡膠腳，基於與社會福利處的參與式設計研究，由 100% 可回收熱塑性彈性體製成。設計靈活，轉動過程所需的能量較少，易於操作。區別顏色可防止與其他顏色混合，並可將其更換為遠足棒版本。這是個靈活而節省成本的解決方案，以迎合長者的需要。



Designer 設計師
Alex KING 荊培育

A multi-disciplinary designer specializing in universal design and healthcare product design.
一名具多種專業的設計師，專注於全球產品設計和醫療保健產品設計。



MULTI-FUNCTIONAL CHARGING
CABLE KEY HOLDER
便攜式多功能充電線皮扣



Designer 設計師：**HUI Man-Ho** 許文浩
Company 公司：Goki International Holding
Company Limited
Website 網頁：www.goki.com

The design is equipped with a boot pinch and a SIM slot for easy storage.

It equipped with Android mobile phone charging cable, but comes with different models of mobile phone adapters, convenient for different mobile phone users to use at the same time. It's stylish and made of leather, can be used as daily accessory. Users can hand carry a full set of cable accessories include the setting for work or travelling with all-in-one.

設計備有開機針槽和 SIM 咭槽，方便用家收納。除 Android 手機充電線外，同時備有不同型號手機轉換插頭，可使不同手機用家同時使用。使用皮革式物料製成，設計型格，可作日常飾物之用。

方便用戶攜帶，備全套電話充電配件的皮扣於旅行及工幹時使用。



PROP COASTER, SET OF 2
PROP COASTER
極簡時尚手機 IPAD 平板
支架桌面支撐架多功能墊



Company 公司：
Protege Inc. Limited

Website 網頁：
www.protege-inc.com

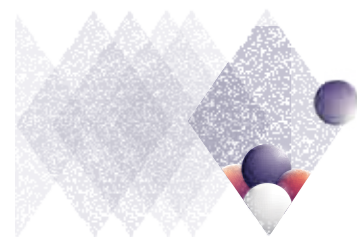
The food grade silicone coaster protects the table surface from stains, scratches and liquid damage. It can be turned into a convenient phone and tablet stand when not in use. The silicone is a heat-resistant, multi-functional trivet which is easy to access around home to keep you organized throughout the day.

一個多功能手機及平板杯墊，在您任何時間需要時使用。食品級矽膠可以保護您的檯面免受污漬、刮痕和液體弄污，並且在不使用時可以作為手機和平板電腦支架使用。耐熱多功能支架更可作為家居裝飾，讓您家居整日保持整潔有序。



Designer 設計師
Adin MÜMMA 馬慕文

Worked in Europe and Asia, designing, sourcing and overseeing production. In 2014, he started his own design consultancy and brand in Munich, Germany producing electronic accessories for home.
曾在歐洲和亞洲工作，為公司設計和監督生產；於 2014 年，更在德國慕尼黑開始了他的設計諮詢和品牌，製造家庭生活電子配件。



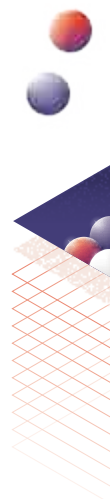
BLOSSOMS
花開富貴



Designer 設計師：**Chris TSUI** 徐淩誠 •
Jason KWAN 關子軒
Company 公司：White Ground Limited
Website 網頁：www.whiteground.com

9 different Chinese New Year greetings are transformed into emblems and a traditional seal engraver hand-carved on traditional Chinese seal stones. With the greetings imprint as the flowers and the wishes in English as the branches, each card is unique with the hand-written numbers in the 300 limited editions.

以中國九個不同的新年祝福語為旨，設計轉化成圖印，並請印章雕刻師傅刻於印章石上。以圖章沾取印泥，蓋印於賀卡；沾染著赤砂色印泥下的祝福語，好似朵朵的桃花。300 張賀卡的右下方同時以手寫毛筆字標記號碼，代表著每張卡片都是獨一無二的。



FINALIST 入圍作品



BEAUTY CHATEAU

美麗滿屋

Designer 設計師 : **Helena CHIU** 趙婉玲 • **Karen LAM** 林嘉慧 •

Anneliese HUI 許安怡

Company 公司 : DaDa Group Limited

Website 網頁 : www.dadagroup.com.hk



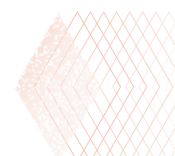
NEVER-NEVER BEER

Designer 設計師 : **Woody CHAU** • **Can CHAN**

Company 公司 : Never-Never

Website 網頁 : www.never-never.hk

LIFE & LIVING BACKPACK 生活與生命之背包



'Life & Living Backpack' is completely waterproof and airtight. Besides used as a backpack, it can also be a seat booster when bringing kids to the restaurant, or a floating bag if accidentally falls into the water. Two levels of zippers give you the choice of smooth zipping for daily use, or airtight zipping for special purposes. It has three separable bags specially designed for laptop, accessories, and clothes which perfectly fit in the backpack. This backpack isn't just a living style, but one day it may save a life.

背包完全防水，達致密封。帶著孩子到餐廳時可用作加高坐墊；意外落入水時可以即時成為救生浮袋。特別設計兩層拉鍊，外層順暢拉動方便日常使用，內層緊密封漏適合特別情況。袋內有三個獨立袋分別專為電腦、配件、及衣物而設計，整齊放置。這背包不僅是一種生活時尚，有一天它可能救回一命。

Awarded by 嘉許者：

Mr. Roger SWALES



Company 公司 : Hoi Lee Enterprise (China) Limited Website 網頁 : www.hoilee.com



Designer 設計師

Jacky WONG 黃志強

With over 10 years' experience of product design and development, focused on plastic, metal and fabric related products. 擁有超過 10 年的產品設計和開發經驗，專注塑料、金屬及布料有關的產品。

KNITWARM SHAWL NECKPILLOW 2 IN 1 織暖披肩頸枕二合一



Company 公司：
Fung Fat Knitting Mfy Ltd

Awarded by 嘉許者：
Ms. Alice LAI



Supported by the patented KnitWarm technology, this Shawl NeckPillow can be used in different ways to provide instant and adjustable warmth to your neck, shoulder and waist. You can wrap your shoulder with the Shawl or cover your lap with it like a blanket. Made with ultra-fine Merino Wool for its next-to-skin softness, breathability and all the natural benefits. The Shawl NeckPillow is a perfect integration of nature and technology. With a connection of a 5V2A rechargeable power bank, you can adjust the heat levels and enjoy the thermal relaxation therapy for comfort anytime and anywhere.

「織暖披肩頸枕二合一」以精細柔軟的羊毛制作，特高透氣性，天然特性配上專利科技，能隨時隨地輕鬆暖敷身體各部位。它更連接 5V2A 可充電電源，讓您可以隨時隨地因個人喜好而調教溫熱及時限。



Designer 設計師：
Regina KWOK 郭秋萍 • **Eva LEUNG** 梁玉鳳 • **Stephen NG** 吳錦權 • **Stanley KWOK** 郭志雄 •
April HUI 許曉霞

A professional team devoted to integrate newly patented technology into a creative design to improve daily life. 一隊專業團隊以新研發的專利技術配合設計，推出創意產品，改善日常生活。



BIXTOP 行車頂



Company 公司：
Cycling Zone Company Limited

Website 網頁：www.cycling-zone.com

Awarded by 嘉許者：**Mr. Brian SUN**

A one-of-a-kind shade, shield and shelter for all seasons. An Umbrella with a robust frame made from glass fiber tubes and high-tensile string. It is registered with EUIPO design patent in 2016.

It's especially made for cyclists who readily look for comfort and protection, when they are riding in the scorching sun, a rainy day or on a chilly morning.

「行車頂」是一款獨一無二、集遮太陽、擋風雨及保護的全天候屏障。車傘的堅固框架是由玻璃纖維管和高抗拉度的弦線製造。此設計已於 2016 年獲 EUIPO 設計專利認證；特別為一些在驕陽下、雨天中或寒冷清晨騎自行車而又追求舒適和安全的人士而設計。



Designer 設計師：
LAU Koon-Hang 劉冠行

A product designer with almost 10 years of intensive experiences in innovative ideas, 3D space design, mechanical and structural design.

一位擁有近 10 年豐富經驗的產品設計師，專注於創新理念、3D 空間設計、機械和結構方面設計。

JIGZLE - GAME STATION - SKEE-BALL

JIGZLE - 經典滾球遊戲台



Designer 設計師：**LAM Chin-Pong** 林展邦 •
CHUNG Wing-Lam 鍾穎琳

Company 公司：**Starlite Visual Communication Limited**

Website 網頁：www.greentanet.com

This classic carnival style skee-ball machine reminisces the joyful childhood memory about playground. The process of assembling the puzzle engages family and friends to enjoy this simple fun game together.

「經典滾球遊戲台」勾起大家兒時於遊樂場內美好的回憶，現在靠我們再次創造滾球遊戲台。跟身邊的人一起組裝，共度歡樂時光。



COMBO CASE 多功能公事包



Designer 設計師：**TSANG Wing-Sze** 曾詠詩 •
SHING Wai-Ho 成暉昊

Company 公司：**UC Development Limited**

Website 網頁：<https://youseeuc.com>

A multi-functional briefcase can be used for versatile purposes, such as protecting your laptop computer, documents, mobile phone, stationery or the study materials you need at school or workplace. The briefcase contains different accessories for mix and match, you can assemble your personal briefcase with different outlook every day.

‘Combo Case’ 一個多功能的公事包，除了保護您的電腦、文件、手機或每天外出時需要使用的工具外。它備有不同的配件能讓您自由組合及配搭，讓您每天外出都擁有一個新形象。

ORIGAMI WINDBREAKER 摺紙風衣



Designer 設計師：**Jessica LAU** 劉婉婷 •
Walter KONG 江德華

Company 公司：**Blind Creation Company Limited**

Website 網頁：www.blindbyjw.wixsite.com/home

A super lightweight windbreaker coat that can be folded into a small size of origami bag and easy to carry around. Also, it's a good tool to teach the way to fold up clothes neat and tidy.

利用布摺出兒時的摺紙布包為設計，再用超輕身的物料做成風衣，可以隨意摺起放入摺紙包，方便易用。它亦是一件能讓您學會摺衫的好工具！



FINALIST 入圍作品



LOCK GO - FAST LOCK ACCESSORIES FOR SMARTPHONE

LOCK GO - 快速扣手機配件

Designer 設計師 : **Keith LAI** 賴成志
Company 公司 : Bondale Electronics Ltd
Website 網頁 : www.ipopstylish.com



BISIGNAL GLOVE

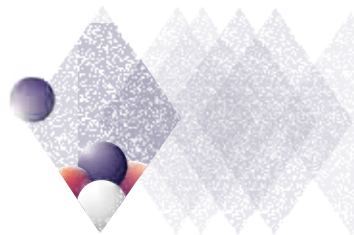
行向燈手套

Designer 設計師 : **LAU Koon-Hang** 劉冠行
Company 公司 : Cycling Zone Company Limited
Website 網頁 : www.cycling-zone.com

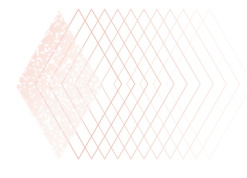


PHONE STAND+

Designer 設計師 : **Kingdy LI • Gary FU**
Company 公司 : Area Plus Limited
Website 網頁 : www.areaplus.com.hk



YI DONG 易動



Due to the duration of exposure to sunlight, the taste of tea from eastern side of the mountain can be different from the opposite side. To denote this idea, the visual concept of "Yin" & "Yang" is featured in this design. Each small box is contained a fine tea product. The position of small boxes on the hanging frame is changeable and can be composed into hexagram if you have 2 sets of "Yi Dong". The movement of tea, time and people is the essence of "Yi Dong".

概念源自產茶東西區受日照長短差異而出產不同茶韻，合易學陰陽哲理。演繹古今簡約之美並以掛畫形式包裝，每小盒裝載頂級茶葉，可隨意調動擺放位置；有兩套則可構成上下爻成卦。物動、時動、人動，是為「易動」。

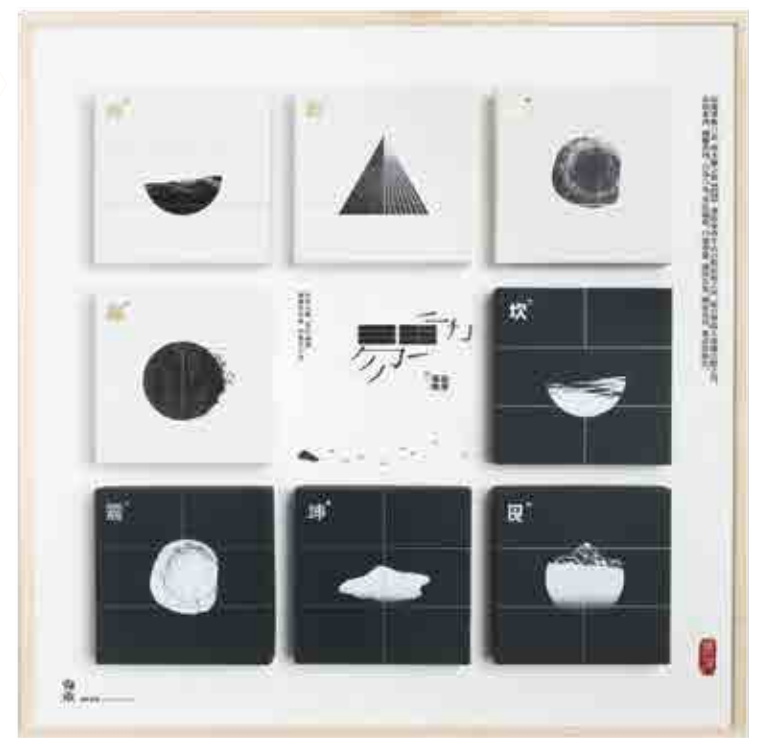
Awarded by 嘉許者：

Mr. Tommy LI

Designer 設計師
WAN Wai-Nang 溫衛能

Wai-nang majored in graphic design study during his education. With years of experience, he specialized his work in the range from visual branding, packaging, editorial to experimental designs.

Wai-nang 在讀書時期主修平面設計。憑藉多年的經驗，他現專注於品牌、包裝、編輯實驗設計有關方面的設計。



Company 公司 : AOMM Creative Limited Website 網頁 : www.aommcreative.com

Designer 設計師
YIM Chi-Kwan 嚴志君

Chi-Kwan is a graphic designer major in visual communication and focus on graphic space and font design.

志君為一名平面設計師，主修視覺傳意科，現主力圖形空間及字體設計。

FULL OF FORTUNE 攞滿花



Company 公司：
Safe Power Industrial Ltd.

Website 網頁：
www.safepowerhk.com



Inspired by the traditional Lunar New Year candy boxes, the double-layered design can serve up to 16 types of candies on its upper deck, with thoughtfully-devised fold-up lids. In the middle lies a little metallic container interwoven with golden petals, a blossom translates into a year of prosperity. It also comes with fancy red pockets in the form of kumquat and Lunar New Year fritter, propitious fun things. The lower deck bears six types of traditional red pockets, all with unique pattern made of fancy paper. Magnetic lids attached. The candy box is exquisite and useful, which will certainly bring about loads of joy and fun during the festive season.

設計靈感來自中國傳統新年全盒，結構分成兩層，各有不同用途，頂層為摺疊式全盒，可承載 16 款不同賀年糖果款待客人，亮點是中間位置使用金屬雕花製成精美設計花瓣的小盤子；形同鮮花綻放，寓意新年欣欣向榮。另外配上新春賀年食品「玩味」金吉和角仔設計的利是封。第二層是承載了六款不同設計玩味傳統精美的利是封，特選的紙張製成。整套全盒套裝開合是使用磁石組裝，精美而實用兩者兼備，迎合中國傳統節日之餘帶點趣味。



Designer 設計師
Crystal SO Wing-Yan 蘇穎殷

Crystal was majored in design for exhibition and museums and worked in museum industry for years.
Crystal 主修展覽及博物館設計系，多年來於博物館行業從事設計創作。



Designer 設計師
Mavin MA Wai-Yuen 馬煒源

Mavin was worked in advertising agency and museum, involved in public art, museum projects and marketing strategy.
Mavin 曾於廣告公司及博物館工作，過去參與多個公共藝術項目、博物館項目設計及市場策略計劃。

AGAPEPLAY - RESIN ART SET E1 / E2 / E3 樹脂工藝自製組 E1 / E2 / E3



Company 公司：
agape design limited

Website 網頁：
www.agape-resin.com

A DIY resin coaster set, you can be an artist in an hour and create your own art piece. It is super light and uneasy to break, with a glass and ceramic look. Flow in the art with your family and friend or lover and embrace the joy of DIY. Art is life!

一小時內讓您成為藝術家，創造自己第一件藝術品。自家製作一個晶瑩剔透的樹脂杯墊，畫出自己的紋理圖案。質料猶如琉璃或骨瓷的表面，輕巧而不容易跌破的樹脂杯墊。與家人、朋友、愛人共享創作時間，享受流動藝術所帶來的喜悅。



Designer 設計師
CHEUNG Wui-Hei 張滙希

An experienced designer majored in architecture studies and interior design.
具豐富經驗的設計師，主修建築學和室內設計。

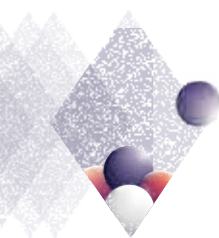
KILL TIME - CALENDAR 2019 打發時間 - 2019 年曆



Designer 設計師：**NG Wai-Ming 吳偉明**
Company 公司：Urban Air Design Ltd
Website 網頁：www.urbanairdesign.com

Replacing traditional calendar by a creative design, dart target calendar. Regardless your travel plan is beyond imagination or just to seek joy amidst in busy work-life, with this target dart and a few darts you can get a moment of relaxation and help you to pick random dates to plan inspiring trips for vacation.

以一個嶄新設計的鏢靶年曆以取代傳統年曆的設計，把十二個月份融在於鏢靶年曆其中。不論您的旅遊想法有多天馬行空，或只是純粹在工作中偷閒，擁有這個鏢靶、幾支鏢，把它掛在牆上，執起飛鏢投擲開去，落在那一天就請假去輕鬆一下吧！



JIGZLE - THREE STARS - FULUSHOU JIGZLE - 福祿壽



Designer 設計師：**Ivan HO Chung-Yung 何宗融 • Ocean KONG Kam-Lam 江鑑林**
Company 公司：Starlite Visual Communication Limited
Website 網頁：www.greentanet.com



Three stars named Fu, Lu and Shou symbolize happiness, prosperity, and longevity, are popular symbols of good fortune in Chinese culture. Jigzle has transformed these three stars into modern yet classic looking figurines with unique joint system, allowing flexible movements for interaction.

福祿壽象徵幸福、吉利、長壽，是中國家庭喜歡擺設的傳統吉祥物。

Jigzle 重新包裝福祿壽，並加入特殊關節結構，令可動的福祿壽更有活力，帶給大家互動感。

FINALIST 入圍作品



POSTALK POP-UP LANDSCAPE

Designer 設計師 : **Joe WONG 黃文翰**
Company 公司 : Takon Product Development Limited
Website 網頁 : www.postalk.com.hk



BUBBLE MEMORY STICK 泡泡記憶棒 (u 盤)

Designer 設計師 : **Dilara KAN • Bodin HON**
Company 公司 : Yellowdot Design Ltd
Website 網頁 : www.yellowdotdesign.co

FINALIST 入圍作品



ORIGAMI WALLET BY JOUETLE® JOUETLE® 摺紙藝術錢包

Designer 設計師 : **Abira CHAN 陳嘉倫 • Raymond CHEUNG 張堃 • Flora LI 李方園**
Company 公司 : Global Glory Industrial Ltd.
Website 網頁 : www.jouetle.com



GOOD LUCK! BOOKMARKS 幸運餅乾書籤組

Designer 設計師 : **LAW Wing-Hong 羅永康**
Company 公司 : The Daydreamer Studio
Website 網頁 : www.daydreamer.com.hk



3D PRINTING ACCESSORY -STRING ART 3D 打印時尚首飾 - STRING ART

Designer 設計師 : **Chelston NG Tsun-Yin 吳俊賢 • Rainy NG Chung-Ting**
Company 公司 : Chelz Studio Limited
Website 網頁 : www.blank-concept.com

WIRELESS STAND



A wireless charger based on the flat and folding concept with dual functions. Using the characteristics of leather, it can be used as a simple mobile charger or folded into a stand while charging the mobile and still be safe to operate.

基於平面和折疊概念設計而成的無線充電器。運用皮料的特性，它可以平面擺放作無線充電器使用，另可摺疊變成手機座，方便安放而且佔用空間很小，更可以同時運作安全可靠。

Awarded by 嘉許者：

Ms. Nicolette NAUMANN

Company 公司：P.S.L. LTD

Website 網頁：www.psldirect.com



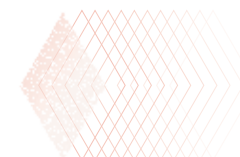
Designer 設計師

Fai LEUNG

An enthusiastic and experienced design professional with 20 years of creative career. 是名熱情且經驗豐富的專業設計師，具 20 年創作經驗。

INVISI

看見 / 看不見



Company 公司：
rcube design studio limited

Website 網頁：
www.rcube-design.com

'invisi' is a combination of desk and portable pen with the design of invisible / visible, which the pen cover can appears or disappears as you needed.

Simply lift the pen straight up, then 'invisi' is ready for quick note to have your ideas written down. Or with a gentle twist to your right or left, the pen will come out with its cap attached, 'invisi' is then ready to join your journey.

'invisi' 的設計為「看見 / 看不見」，是一支隨身筆及桌上筆。筆蓋能隨時隨地消失或再現，把筆垂直提起，筆蓋消失；把筆往右或左方拉出，筆蓋就會出現，方便隨身攜帶及享受書寫的樂趣。



Designer 設計師

Raft WONG

Has been an industrial product designer focused on customer electronic and telecommunication products for over 10 years and currently work as a design director/ founder of his own design studio devoted to in the field of simple design.

過去十多年來，他一直擔任工業產品設計師，專注於電子和電訊產品方面。目前，他為自己設計工作室的設計總監 / 創始人，致力於簡單設計領域發展。



GOSPACE - WIRELESS STORAGE SHARING & CHARGER

GOSPACE - 無線連接外置分享
儲存裝置及無線充電器

Designer 設計師 : **Gray LEUNG**
Company 公司 : Graphic Guides Design Company
Website 網頁 : www.c-for-carbon.com

'GOSPACE' is a revolutionary storage device for all your portable electronics.

It is a portable cloud that holds all your files with 5G wireless, which faster than ever and allows streaming wireless content. Its storage can be extended without limit and connect up to 8 devices at the same time.

'GoSpace' Pro 把附加功能加進「充電寶」裡，先是可當成外置硬碟，只要插進 SD 卡，透過 Wi-Fi 傳輸即能做到「邊影相邊儲存」效果，較上傳到雲端更方便快捷。但因為是以 Wi-Fi 連接，手機便無法再連接到其他 Wi-Fi 網絡了，因此 'GoSpace' 同時備有網絡接收功能，令手機可經由「充電寶」上網。



MOVER; MOVERPAD; MOVERBOOK; THINKERBOARD



Designer 設計師 : **Alex SUM Lik-Hang** 沈力恒
Company 公司 : S-mall Group Co. Ltd.
Website 網頁 : www.bravestorming.com

"Mover" is a patented, innovative sticky note. Jotting down and visualizing things become neat and tidy with a hand feel. Mover is a movable and magnetic memo brick with 15 layers, which can be peeled off by layer and refill anytime. It's "press and pick up" feature provides easy retrieve of paper block closely surrounded by others without distortion of others' position.

One task on your hand with "MOVER", you can easily plan your schedule with the magnetic-featured organizers – "MoverPad", "MoverBook" and "ThinkerBoard" by its unique features: the ability to stand, to closed, snapping on the computer monitor side, mobility for carrying and easy template switching.

"Mover" 是創新的專利產品，具磁力的便利貼磚底托，有 15 頁可更換的便利貼。「按下拿起」的特性使取出 Mover 更方便，更整潔地備忘。它可配上 "MoverPad"、"MoverBook" 和 "ThinkerBoard" 獨特的功能：站立、蓋上、磁上顯示屏旁邊，及可攜帶和格式更換，以方便計劃屬於您的行程。



HOME & HOUSEWARE 家庭及家居用品

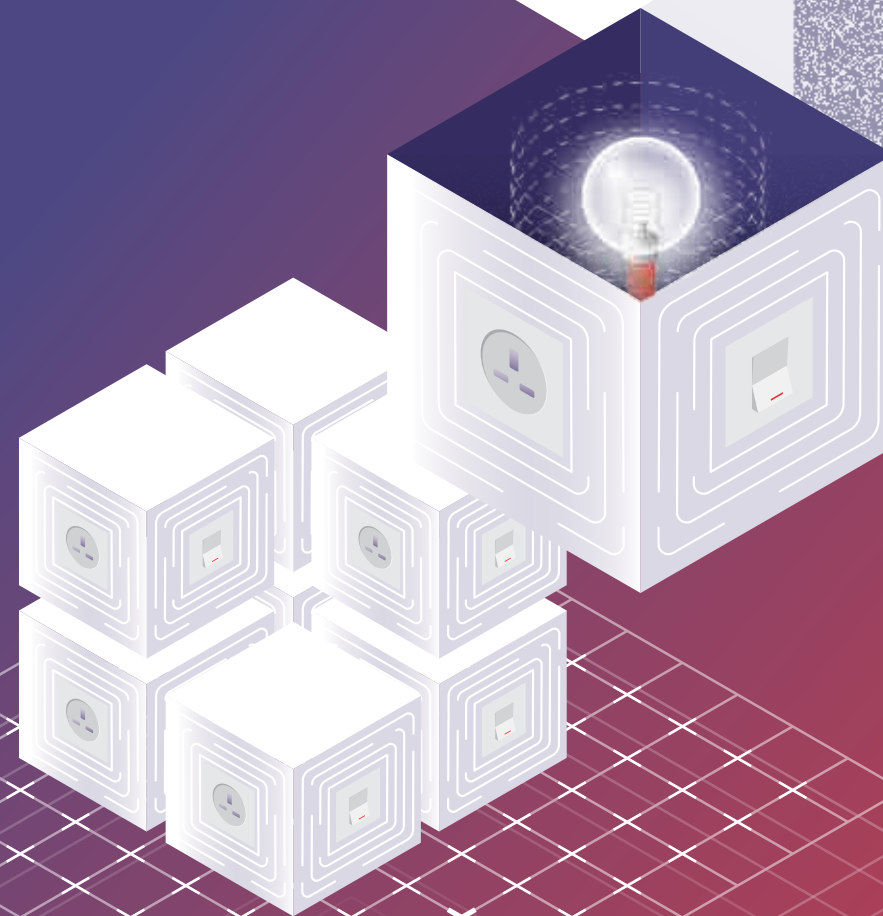
DINING & PARTY
餐宴派對

KITCHEN
廚房用品

LIVING & HOME DÉCOR
起居生活及佈置

PET & PLANT CARE
寵物及植物護理

WELLNESS & PERSONAL CARE
保健及個人護理



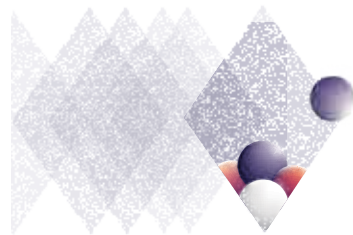
TUBO TEA BOTTLE FOR COLD BREW

TUBO 氣壓系隨身玻璃泡茶杯

Designer 設計師：**Zec CHAN** 陳志梁 •
Carlos LUO 羅沛帆
Company 公司：JEEP INNOVATION LTD.
Website 網頁：www.becoming-designer.com

'TUBO tea bottle for cold brew' is a portable drinking bottle and a tea infuser (up to 60mL). Air-tight seal design prevented the leaking problem and it is easy to clean with the non-dead end design, while the dense surface of borosilicate can prevent the deposition of tea stains. It is easy to brew by flipping the bottle up-side-down. The silica gel filter with iconic netting is able to separate the tea leaves or to control the brewing process at you wish.

「TUBO 氣壓系隨身玻璃泡茶杯」是一款便攜式的飲用水瓶和茶葉浸泡器 (可載 60 毫升)。它採用氣壓密封設計無憂防漏，無死角設計，輕鬆清洗。高硼矽玻璃表面有效防止茶漬沉積，配以矽膠濾網搭配標誌性網紋，輕輕翻轉即可隔開茶葉，濃淡相宜隨心控制。



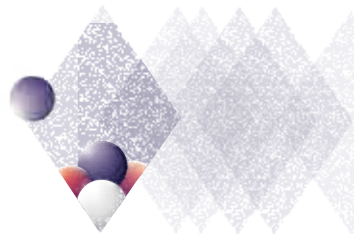
3 IN 1 MULTI GRINDER

三合一研磨器

Designer 設計師：**TANG Yu-Wing**
Company 公司：Samson Bright Industrial Company Limited
Website 網頁：www.samsonbright.com

It has 3 different chambers with separately grinding mechanisms, which can grind pepper, salt or spices at a time. By its compact size design, users are able to hold the grinder easily and adjust the grinding coarseness at the bottom of the mill.

它有 3 個不同的透明窗口及獨立的研磨機制，可分別獨立磨出胡椒、鹽或香料，並可在磨機底部調較需要的研磨粗幼度。其設計合適的尺寸更可令用戶輕鬆握住使用。



YOUR LITTLE MOMENT (TEA INFUSER X GLASS KIT SET)

小時光茶濾套裝



Designer 設計師：**Tina LEE** •
Andrew WONG 王寧
Company 公司：Wbottle Limited
Website 網頁：www.wbottle.com

Adopted the concept of western product design to create the overall appearance with the sense of modern art, while its new design style makes it differ from traditional presentation of tea culture.

採用了西方產品設計的理念來打造整體外觀；選用新式插畫使其跳出茶具固有文化的傳統美學，令整個茶具套裝充滿現代藝術氣息。



TODDLER SELF FEEDING TRAINING SET

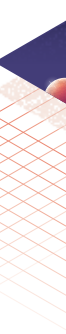


Designer 設計師：**Irene TONG**
Company 公司：Gift Concept Products Limited
Website 網頁：www.marcusnmarcus.com



It is a self-feeding training set comes with a yummy dip plate and a palm grasp spoon and fork. The yummy dip suction plate not only is divided into recommended portion sizes for easy meals, but also features with a dipping compartment that encourages kids to eat more veggies. The fork and spoon have been shortened with 90 degrees rotation on the handle, so the utensils will fit more easily into a toddler's palm grip.

這套自行進食訓練套裝包括可愛造型的吸盆分隔碟和特別設計的勺子和叉子。吸盆分隔碟配有醬汁浸漬容器，有助於鼓勵孩子吃更多的蔬菜。易握勺子和叉子的尺寸縮短以配合孩子的小手，手柄方向跟平常的旋轉了 90 度角，讓剛學習自行進食的孩子更容易掌握及有效地使用餐具。



GALAXY PRESSURE COOKER 一鍵旋鈕健康高速鍋



This pressure cooker comes with an easy one hand opening and locking function and a new design safety system and made of high quality stainless steel. It has two pressure levels setting for vegetable and meat. The 'Galaxy Pressure Cooker' has won the iF, IDEA and Ambiente Innovative Kitchenware in the year of 2019. To make cooking healthier, it can reduce 70% cooking time and 50% in energy saving with great contribution.

憑著一鍵旋鈕快速操控，時尚設計並用上優質不銹鋼打造及全新設計安全裝置，Galaxy 高速鍋得到 iF、IDEA 設計及德國 Ambiente 廚具創意 2019 年度大獎，為各家庭節省 3 成煮食時間及一半的能源，成就快速健康烹飪。

Awarded by 嘉許者：

Prof. Eric YIM, JP • Mr. Roger SWALES • Prof. Wenqing YANG • Mr. Ron LEUNG



FOSA VACUUM FOOD STORAGE SYSTEM FOSA 食品真空儲存系統



Company 公司：
Hop Shing Metal &
Plastic Manufactory Ltd.

Website 網頁：
www.fosahome.com

The "FOSA Vacuum Food Storage System" is a practical and environmental-friendly design to help consumers to keep food fresher and longer. With the one touch operation, it will pump out the air from the vacuum container in seconds. Its stackable containers will also help to create a well-organized kitchen and save money as less food will be wasted. And for those at-home chefs who want to do sous vide cooking, its vacuum bag combo set is a must to have!

「FOSA 食品真空儲存系統」是一個既方便又環保儲存食物的最好方法，以保持原有的食物味道及延長保鮮期。它以一鍵式操作，可在幾秒內完成抽空。它的方形真空罐可堆疊，方便儲存以解決食物儲存問題，而且可幫助省錢，減少浪費食物。另外，亦可以用其真空保鮮袋腌製鮮肉蔬菜，嘗試時下流行的慢煮方法烹調！

Designer 設計師

Randolph KWOK 郭展鵬

Randolph is a product development and design director with over 20 years of experience.

Randolph 是一位擁有二十多年經驗的產品開發和設計總監。



Designer 設計師

Maggie TSANG 曾詠珊

Maggie is an industrial designer engaged the possibility to tackle a wide range of problems in her designs over the years.

Maggie 是一位工業設計師，多年來致力利用她的設計解決各類問題。



Company 公司：CS Group Holdings Limited Website 網頁：carlschmidtsohn.com



Designer 設計師

Shangkai WU 伍尚凱 • Zhirong HUANG 黃志榮 • Jianxiu LIANG 梁建秀

A team formed by the head of R&D department and product designers with 8-20 years of experience, specializing in stainless steel household product design, structure and technical engineering.

一個由集團研發部門的主管及二名產品設計師組成的團隊，具八至二十年經驗，專注於不銹鋼家居產品設計、結構和技術工程。

PINNA IHC AI GAS STOVE PINNA IHC 智能煤氣爐



Company 公司:
Serafinozani International Limited

Website 網頁: www.serafinozani.com.hk

Awarded by 嘉許者:
Mr. Elmond CHEUNG



The new, user friendly 'Pinna IHC gas stove' can overcome the problem of overheating during cooking. It can operate and regulate the cooking temperature automatically below 230°C when IHC cookware is applied. As a result, the food nutrient can be retained. Enjoy the fun of cooking!

新開發的「Pinna IHC 煤氣爐」可以解決烹飪過熱的問題；當配合 IHC 鍋具時，可以自動控制和調節烹飪溫度至低於 230℃，避免過高溫烹調，故此食物營養得以保留。操作方便，讓您可以輕鬆享受烹飪。



Designer 設計師

Tomas ROSÉN • Nicol BOYD

They both majored in design studies and have been working in the field of product design for over 10 years. In 2007, they co-founded their own office for product design in Hong Kong.

他們都主修設計，並在產品設計領域工作超過 10 年。2007 年，他們在香港共同創辦了自己的產品設計辦公室。

WBOTTLE



Company 公司: Wbottle Limited

Website 網頁: www.wbottle.com

Awarded by 嘉許者: **Ms. Nicolette AUMANN**

'wbottle' is a triple layer vacuum flask, made of high-quality stainless steel, can keep beverages cold for 24 hours and hot for 12 hours. It features a durable material Tritan™ on the mouthpiece to avoid rusty flavour together with a larger tea infuser to hold tea leaves. With specially tuned colours and streamlined body design, 'wbottle' merges aesthetic with sustainability in design against disposable bottled beverages where possible, a big hug to the environment.

‘wbottle’是以優質不銹鋼製成的三層真空保溫瓶，可將冷飲保持 24 小時，熱飲保暖 12 小時。而瓶嘴上耐用的 Tritan™ 材料，能避免金屬瓶嘴的冰冷感覺及金屬味道，同時附上大容量的茶濾，令用家可隨愛好泡製喜愛飲料。‘wbottle’為美學與環保融為一體的設計。



Designer 設計師

Andrew WONG 王寧

A chief designer devoted in product sustainability field to reduce plastic pollution.
一名首席設計師致力於產品可持續發展領域，以減少塑料污染為目標。

MINI STOVE TOP OVEN 烤蒸寶



Designer 設計師: **Jimmy YUNG 容小炎**

Company 公司: Concepts New International Co., Ltd.

Website 網頁: www.ansenterprises.com.hk



It's an innovative cookware with multi-cooking functions, such as roasting, baking and steaming. Additional to its preferable size for small household, its flame cooking method created the flexibility, it can be used both indoor and outdoor at your choice.

集烤、焗、燒、煮等功能於一身的多功能明火煮食創新產品，設計小巧，特別適合小家庭。而且它不需要電源，並以火為能源，戶外都能使用，能夠隨時隨地因應需求，靈活移動，煮出超美味佳餚。

THE SELF-STERILIZED TABLEWARE 健康殺菌餐具



Designer 設計師: **MAK Sai-Chi 麥世枝 • Brian TSANG Hing-Kai 曾慶佳 • MAK Wing-Yan 麥穎欣**

Company 公司: Good Season Creation Limited

Website 網頁: www.abacoating.hk



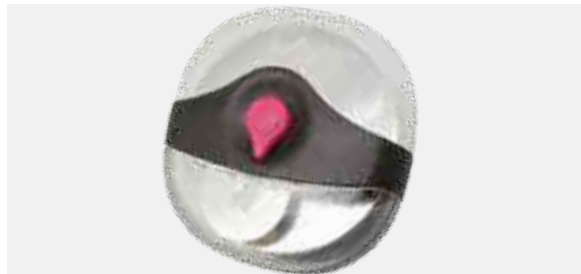
For convenience and hygiene issue, people always use one-off tableware but cause environmental problems and contain chemicals as result. However, those wooden, bamboo and plastic made tableware are easy to breed bacteria and virus as it has many pores and difficult to clean. This tableware are coated by patented PVD technology, in which Nano silver and Tungsten carbon are coated on surface of the tableware for self-sterilization to kill bacteria and virus.

我們為了方便及衛生，經常使用即棄餐具做成環保問題，而且很多都含有化學成份，同時木製、竹製或膠製的餐具有很多細孔，都很容易藏菌並不易清洗。此餐具上以專利的鍍膜用真空電鍍技術，把納米銀離子和碳化鎢用真空電鍍離子濺射到餐具表面，有效殺滅病菌和病毒。

FINALIST
入圍作品

DUAL MEASURING SPOON & FUNNEL
斗量

Designer 設計師 : **Jason HO Yip-Shing 何業成**
Company 公司 : Kool Limited
Website 網頁 : www.kool.com.hk



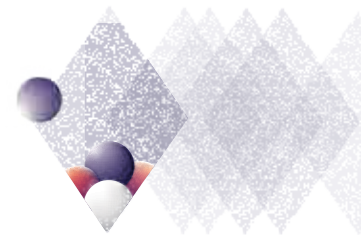
DUO CUTTER
兩用圓刀

Designer 設計師 : **Dixon POON 潘順笙**
Company 公司 : King's Flair Development Ltd.
Website 網頁 : www.kingsflair.com.hk



DUAL CITRUS REAMER TONGS
扭檸料理夾

Designer 設計師 : **Francis PUN 潘卓華 • Jason HO Yip-Shing 何業成**
Company 公司 : Kool Limited
Website 網頁 : www.kool.com.hk

FINGER PROTECTED DOOR
防夾手安全門

It's specially designed to reduce the risk of avoidable household injuries. Its 2-in-1 door with protection device that can prevent children's fingers from being trapped and crashed even when the fingers get caught in an opening or closing door.

產品專為用於減少手指被夾住的家居意外而設計的。它把保護裝置與傳統木門結合，以防止在開關門期間兒童手指被夾住和撞擊的意外。



Company 公司 : dp research & development Limited Website 網頁 : www.dprd.asia



Designer 設計師
Vic CHAN 陳德禮

An architectural designer with over 15 years of experience, delegated to provide architectural solutions to reduce the risk of avoidable household injuries. 擁有超過 15 年經驗的建築設計師，致力於提供設計及解決方案，以降低家居意外的風險。

JOT - PORTABLE BATTERY BASE FOR GOOGLE HOME MINI

'JOT' is a portable battery base for the Google Home Mini designed to provide rechargeable, cord-free mobility at your fingertips. Simply nest the Google Home Mini into 'JOT' to enjoy the untethered cordless mobility anywhere at home.

'JOT' 便攜式電池底座能提供電源給 Google Home Mini 而無需受電源位置束縛。只需把 Google Home Mini 嵌入 'JOT' 即可在家中任何地方使用。



Company 公司：
EverWin Design Limited

Website 網頁：
www.everwin.com



Designer 設計師

Matthew CHU Man-Ho 朱文豪 • Kenny AU Ka-Hung 歐家鴻

Matthew worked as a product design professional for more than 8 years, specialize in electronic consumer products. Kenny has been working as a product designer focused on consumer electronic products since 2006. Matthew 曾擔任產品設計超過 8 年，專注於電子產品設計。自 2006 年以來，Kenny 一直致力於消費電子產品設計。

I-BOX CENTURY



Designer 設計師：**Thomas Patrick DURKAN**

Company 公司：Philex Hong Kong Limited

Website 網頁：www.philex.com.hk

A classic speaker which can be controlled by voice or its supporting applications such as through Wi-Fi to access Amazon Alexa, music services, news and smart home features; or using Bluetooth to stream directly from your smart phone or tablet to enable smart home devices, or to connect an external music device using an auxiliary cable. It can be connected up to 8 i-box Century speakers to form a multi-room system.

經典揚聲器可以通過語音或其配套應用程序控制，使用 Wi-Fi 可接駁 Amazon Alexa、音樂服務、新聞和智能家居功能，使用藍牙能直接從智能手機或平板電腦作流式傳輸，啟用智能家居設備，或使用輔助線連接外部音樂設備。最多可連接 8 個 i-box Century 揚聲器，形成多空間系統。



SKYTOTE - PORTABLE BATTERY BASE FOR AMAZON ECHO (2 GEN)



Designer 設計師：**Kenny AU Ka-Hung 歐家鴻 • Matthew CHU Man-Ho 朱文豪**

Company 公司：EverWin Design Limited

Website 網頁：www.everwin.com

A portable battery base to provide rechargeable, cord-free mobility for the Amazon Echo (2nd Gen). With simply attachment, it is ready to use anywhere at home.

'SKY TONE' 是 Amazon Echo (第二代) 的便攜式電池底座，能提供電源而不受電線長度限制移動範圍，可在家中任何地方使用。

3R CYBER LOOKBOOK 3R 隨身筆記簿



Designer 設計師：**Alise LO • Jason LO**

Company 公司：WLD Technology Ltd.

Website 網頁：wldtech.wordpress.com

Recycle the wastage by reusing, reproducing and redefining electronic waste as well as deform its characteristic and the function to create such new design product. It not only aimed to educate young generation to love the earth and reduce wastage, but also to promote waste reduction at the source, clean recycling, and to turn waste into usable material.

重新設計使用回收電子廢物而製造的筆記簿，它通過重新使用、生產、定義電子廢物，改變其特性和功能以有效地重生這些有價值的電子廢棄品，旨在教育年輕一代愛護地球，減少浪費。推動源頭減廢、做好乾淨回收、實踐轉廢為材！



DAY AND NIGHT (CONCRETE ART) 日與夜 (水泥畫)

The sophistication of Chinese landscape painting lies in the versatile expression of brushstrokes. An experimental painting by hands instead of paint brushes by maximizing the unrefined nature of concrete on a simple flat surface, conveying the flow of nature from afar; bringing forth the weathered rocks, and a sense of no spontaneity.

山水畫的意在於深邃，古人從「勾」、「皴」、「擦」、「染」、「點」帶出山石的輪廓。晚生班門前弄斧，以手作筆，遠取其勢，從最基本的平視角出發，利用水泥材料的原始性配上歸於簡單的平面，留下不完美的山石凹洞，也是最不經意的缺憾美。



Designer 設計師 : **LAU Chung-Ming 劉頌銘 •
MA Cho-Fai 馬祖輝**
Company 公司 : moldflip studio limited
Website 網頁 : www.moldflipstudio.com



FINALIST 入圍作品



AIR LIGHT 空氣淨化燈

Designer 設計師 : **William LAI 賴偉聯**
Company 公司 : Bondale Electronics Ltd
Website 網頁 : www.ipopstylish.com

PHOTOSYNTHESIS 光合作用



Company 公司 :
UPD Limited

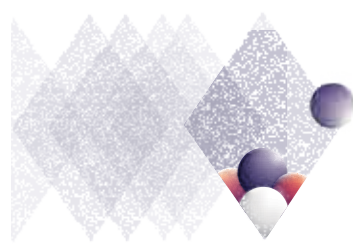
Website 網頁 :
www.greenology.com.hk

'PHOTOSYNTHESIS' is ceiling hanging light in contemporary industrial design style that can grow your plants in a dim environment. Simply attach the glass pot to the ceiling light and to get the light supply to the plants. The glass pot and the ceiling light can also be two separate beautiful decoration at home.

「光合作用」這個產品是一盞簡約工業設計風格的吊燈，同時可讓您在昏暗環境下種植植物。只要把玻璃瓶部份擰上吊燈就能解決光線不夠的煩惱，同時可把吊燈和玻璃瓶分開來擺放作裝飾。



Designer 設計師
Kevin LEUNG 梁浩雲
The head of design and product development team, delegated in the design field of innovative plant related lifestyle design and product development department's responsible person, dedicated to innovative plant product related design.



NATIVE HOUNDS - CLASSIC EDITION



Designer 設計師: **Juan Manuel ZAPATA MUNOZ**
 Company 公司: Native Hounds Limited
 Website 網頁: www.nativehounds.com

A collection of stylish dog leashes and collars designed for those who appreciate timeless design, versatility and personalization, pairing the highest quality leather with brass hardware to create beautiful and functional pieces.

時尚設計的狗帶和項圈系列，專為那些喜歡永恆設計、多功能性和個性化的人而設計，將最高品質的皮革與黃銅配件製成，打造出美觀又實用的單品。

SELF-WATERING PLANTER
自動吸水花器

Designer 設計師: **Kevin LEUNG 梁浩雲**
 Company 公司: UPD Limited
 Website 網頁: www.greenology.com.hk

It is becoming increasingly popular to plant at homes and in offices. This design incorporates sub-irrigation mechanism for healthy growth of root system by maintaining water level between the designated levels and let the plants absorb water as needed.

身邊越來越多人希望在室內種植，但當想到澆水問題就卻步了。這自動吸水花器設計融合了地下灌溉原理，只需把水位維持在指定高度內就能讓植物自己吸取所需水份，以後不用再擔心澆水的問題。

MARCUS & MARCUS
KIDS PREMIUM
ORAL CARE SET
互動全方位
口腔護理套裝

Company 公司:
Gift Concept Products Limited

Website 網頁:
www.marcusnmarcus.com



Everyone knows good oral care is important. Marcus & Marcus Kids Premium Oral Care Set encourages kids to brush at least 2 minutes, while looking at one of the animations plays from the interactive LCD brushing timer. Each product in the set will definitely help kids to find brushing fun and easy!

從小培養護齒的習慣是很重要的。Marcus & Marcus 互動全方位口腔護理套裝包括聲波震動牙刷，LCD 互動計時顯示屏和牙線。互動計時顯示屏是利用 USB 充電，並裝有三個有趣的動畫遊戲，鼓勵孩子每次刷牙時間不少於 2 分鐘，並自小養成用牙線的習慣。



Designer 設計師
Jennifer KO

With 15-years working experience in product design industry, Jennifer has worked diversity ranges of design from consumer electronics, kitchen gadgets and bar accessories and recently focused on baby-design items.

在產品設計行業已擁有 15 年的工作經驗，曾從事電子產品、廚房用品和酒吧配件等多種設計，近年更專注於嬰兒設計產品。

KNITWARM
CALF SLEEVE
織暖腿套

Company 公司:
Fung Fat Knitting Mfy Ltd

"KnitWarm Calf Sleeve" is designed to relieve muscle sore and improve blood circulation. Made with conductive yarn and multi-fibers, it is an ideal thermal therapy on the go. The mini-device or mobile application with 5 adjustable heat levels and a built-in timer ensure a heat therapy at preferred temperature and offer the wearer an utmost comfort and safety.

「織暖腿套」有別於一般壓力腿套，除了時尚的圖案設計外，還能舒適包貼小腿肌肉，配合線控或手機應用程式可調教個人合適的溫熱，同時備有定時關掉功能，安全可靠。以熱力幫助血液循環，從而放鬆及舒緩肌肉痠痛。



Designer 設計師

Regina KWOK 郭秋萍 • Eva LEUNG 梁玉鳳 • Stephen NG 吳錦權 • Stanley KWOK 郭志雄 • April HUI 許曉霞

A professional team devoted to integrate newly patented technology into a creative design to improve daily life. 一隊專業團隊以新研發的專利技術配合設計，推出創意產品，改善日常生活。

PULPAGE BAMBOO TISSUE SERIES 蒲梓竹漿紙巾系列



Company 公司：
Eggshell Creative Limited

Website 網頁：
www.eggshell.com.hk

Pulpage has brought a new AGE of PULP – not the traditional wood pulp, but an environmental friendly bamboo pulp. It is a revolution in resources as well as a revolution in style; not only a product with a satisfying quality, but also with an inspirational character. The witty taglines on the package will make your day with smile.

Pulpage 掀起了一場「紙巾革命」！此設計除了採用環保竹漿取代木漿，使人與環境能和諧共生；設計風格也反映革新概念，包裝上幽默又帶點小智慧的箴言，讓您以微笑開始每一天。



Designer 設計師

Viola PAK 白智慧

A founder of creative design studio, branding director as well as an expert in all-round design strategy and branding management. 創意設計工作室的創始人、品牌總監，同時亦是全方位設計策略和品牌管理方面的專家。



KNITWARM WRAP 織暖護帶



Designer 設計師：**Regina KWOK 郭秋萍** •
Eva LEUNG 梁玉鳳 • **Stephen NG 吳錦權** •
Stanley KWOK 郭志雄 • **April HUI 許曉霞**
Company 公司：Fung Fat Knitting Mfy Ltd

Created with the 3D breathable knitting technique, the stylish yet functional "KnitWarm Wrap" provides the compression and support with stretchable braces and soothes muscles. The patented self-heating module can generate heat within 30 seconds, relieving joint pain, enhancing injury recovery, and serving as a user-friendly, portable and sustainable daily wearable.

「織暖護帶」極具彈性，可完全包圍手腕、固定於關節上，運用針織發熱專利方案。只要接上電源，能在 30 秒內發熱，還能隨個人喜好在控制器或應用程式上選擇溫熱及時間；配有電池袋臂帶，穿戴時可以繼續活動（手腕不適時，盡量減低過度操勞），獨特的圖案令配帶時有時尚的感覺。



SHE FUNS 舒薰活樂



Designer 設計師：**Winsome LOK 駱麗明** •
Ann WU 胡曉恩
Company 公司：Sew On Studio Limited
Website 網頁：sewonstudio.com

"She Funs" likes a family heirloom passing down from the previous generation, related to the word of "heritage". It is made by the second-career women, who inherit the craftsmanship to leverage the fabrics passed from the elderly along with the traditional formula of warm pack to make the product with the hope of passing warmth, health and happiness to everyone.

舒薰活樂跟《傳》字息息相關，成果都是由上一輩傳下來，面料由樂齡傳來的珍藏再配合傳統秘方暖包，透過二度就業婦女傳承的手藝製造出來。將溫暖、健康及快樂無限傳播給大家。

FINALIST 入圍作品



STOP FOGGING UP

Designer 設計師：**Cat LEE 李佩芝** • **Brian CHAN 陳浩然**
Company 公司：Double Black Company Limited
Website 網頁：unsuikyo.com

HKSDA ADVISORY COMMITTEE CHAIRMAN'S REMARKS

「香港智營設計大賞」諮詢委員會主席的話

This year, we further expanded the scope of HKSDA to address the growth of toys and games market and cover the design talents in such field. In order to expand their potential development, group of "0-36 months", "3-8 years" and "8+ year" are introduced under the new category named "Toys and Games".

Despite it is newly introduced to the toys and games market, the entries of this category accounting nearly 20% of total corporate group in HKSDA 2019. Our substantial groundwork is definitely formed in such market. We are amazed with the performance of 2019 awardees, in particular, 1 awarded product from the "3-8 years" group has won 5 awards in total. The satisfying outcome had not only proven our delegation to be successful, but more importantly, it creates a wider path for more local talents to enter the design market.

We extend our appreciation to all participates as well as our co-partners, Hong Kong Toys Council and

Hong Kong Toys Manufacturers' Association. Without their dedicated support, we will not make it. We strongly believe the Awards will definitely provide a new arena for Toys and Games industry.

今年我們再下一城，把大賞擴展至包涵玩具及遊戲產品行業，首次以 3 個新產品組別：「0-36 個月」、「3-8 歲」及「8 歲或以上」，為該行業的本地設計師提供展示創意及發展的機會。

雖然今年是第一年把大賞擴展至玩具及遊戲產品行業，但該類別的參賽作品卻差不多佔公司組總作品的 20%，令人非常鼓舞。而其中 1 份「3-8 歲」產品組別的得獎作品更被評審團選出，榮獲 5 個大獎。這不僅證明了我們努力的成果及決心，更重要的是增闊了本地設計人才的發展。

我們非常感謝所有參加者及合作夥伴「香港玩具協會」及「香港玩具廠商會」，籍著他們的支持，令大賞不斷精益求精，奠下更鞏固的基石，更為玩具及遊戲產品行業帶來一個新的舞台。



Vincent Ma

VINCENT MA

Chairman, HKSDA Advisory Committee, Toys & Games
Vice Chairman, HKEA

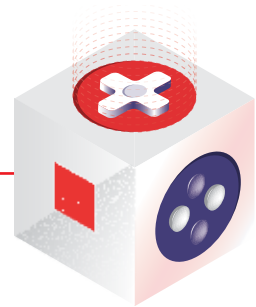
馬偉雄

「香港智營設計大賞」玩具及遊戲產品諮詢委員會主席
香港出口商會副會長

JUDGING CRITERIA

評審標準

TOYS & GAMES
玩具及遊戲產品



TOYS & GAMES 玩具及遊戲產品

0 - 36 MONTHS
0 - 36 個月

3 - 8 YEARS
3 - 8 歲

8+ YEARS
8 歲或以上

BB JUNIOR SPLASH 'N' PLAY SUBMARINE PROJECTOR



Designer 設計師 : **Paul TANG 鄧智恆**
Company 公司 : May Cheong Group Limited
Website 網頁 : www.maycheonggroup.com

Bath time has never been so fun! The Submarine Projector from BB Junior safely displays many sea creatures in multiple colors onto the bathtub floor as your youngster bathes. To activate the projection, simply depress the yellow periscope to cycle through the sea-life collection, which will appear in red, green and blue. The child will discover how light reflects in the water, and is also a great way to reinforce color definition. The submarine is waterproof, floats on the top of the water, and includes a propeller which turns manually.

BB Junior 趣味潛艇投影儀造型可愛，使用安全簡單。在小孩洗澡時，可以很安全地把多種海洋生物形象以紅、綠、藍三種顏色迴圈投影在浴缸底。它在激發小孩們去探索光在水中投影的同時，也能提高他們對色彩的認知。



POPPING FUN DINO 彈彈球手推小恐龍



Designer 設計師 : **Kim CHUNG**
Company 公司 : Winfat Industrial Co., Limited
Website 網頁 : www.winfun.com

Cute little dinosaur can repeatedly eat the ball that is automatically thrown out from the trunk when he is pushed around. However, it may be sometimes missed, then the kid needs to put the ball back to the trunk to continue. Its sleek handle designed to store the ball and suitable for young children to hold tight. Through pushing the little dinosaur around and the process of gripping the small ball, it encourages the kid to walk.

造型可愛的小恐龍在被推着行走時能吃下從樹幹自動拋出來的小球，此動作會不斷循環，但牠也會有偶爾失手的時候，這時小孩需把小球放回樹幹口中，使小球拋接動作繼續。其圓潤的手柄設計，適合幼童緊握，而手柄附有小球的儲存空間，方便收納。透過推動小恐龍、彈出及收回小球的遊戲方式，以鼓勵小孩學習行走。



CHASE ME FUN SQUIRREL 互動松鼠滑板車



Designer 設計師 : **Kim CHUNG**
Company 公司 : Winfat Industrial Co., Limited
Website 網頁 : www.winfun.com

A scooter riding squirrel with built-in sensor at the back, can race forward, backward, spin and zig-zag around along with lights and sounds to attract kids to chase and catch its acorn. Able to detect if someone is chasing after it and will turn around if it hits an obstacle, which makes it harder to catch. The squirrel will chase you back when the acorn was taken from it. This game encourages kids to interact and foster their crawling and walking skills in the playing process.

小松鼠騎著有內置感應器的滑板車四處走動，並利用光線、聲音及花式動作吸引小孩與牠展開互動的追逐遊戲，並以搶走其松果為目標，鼓勵幼童學習爬行和走路。小松鼠能感應到追逐者及避開障礙物，以增加遊戲難度。當松果被拿走後，小松鼠便會展開另一場追逐遊戲，加強了整個遊戲的互動性。



PULL ALONG CRAB STACKER 拉繩疊蓋蟹

Designer 設計師 : **Cindy AU**
Company 公司 : Winfat Industrial Co., Limited
Website 網頁 : www.winfun.com

Cheeky hermit crab stacked up with layers of translucent shells along with a dazzling light effect and cheerful melody, creates a fun atmosphere. When the hermit crab moves, shells will fall off. By stacking up the shells, it trains your kid's small hand muscles and hand-eye coordination.

頑皮的寄居蟹疊上層層半透明的貝殼，配合閃耀的燈光效果及輕快的旋律，製造出歡樂的氣氛。寄居蟹行走時會把背上的貝殼全部傾倒，需要小孩幫忙把貝殼重新疊起，從這過程中訓練小孩的小手肌及手眼協調能力。



ZAX



Zax brings throwing entertainment to the next level! The Zax is made of Softek foam, a superb secret formula. This foam axe uses suction cups instead of a blade, makes it safe to play no matter indoors or outdoors. It's fun to play anywhere and you will be amazed with where it sticks.

This innovative, smart, form of throwing axe utilizes self-releasing suction cups that sticks to any smooth surface, while the exclusive Quickteck Relesase makes it easy to remove the Zax out and have another throw. You can test your accuracy and get stuck on fun with Zax!

Zax 把現時全球最熱門刺激的投擲玩意帶到另一新層次！Zax 採用了一種超級秘方 Softek 泡沫製成。這泡沫斧使用了吸盤代替刀片，可在室內和室外安全地使用。它具備創新、智能及投擲形式，利用自我釋放吸盤投擲斧頭，可以粘在任何光滑的表面上。其獨有的 Quickteck Relesase 技術可以輕鬆移除 Zax 後再次投擲。玩 Zax 可享受投擲樂趣，測試您的準確性！

Awarded by 嘉許者：
Mr. Arthur CHAN • Mr. Johnny MUI • Prof. Leslie CHEN, JP



Designer 設計師
Will NG Chun-Kit 吳俊杰

Will is specialized in industrial design, integration of product & technology and production management. With extensive design experiences in different field, he delegated to transform traditional toys to smart toys emphasized on the interaction. Will 從事於工業設計、專注產品、技術及生產管理。具多年設計經驗，他致力希望把傳統玩具轉變為智營玩具，更加互動性。



Company 公司 : Zasia Limited Website 網頁 : <https://zing.toys>



Designer 設計師
CHAN Chu-Fung 陳柱峰

Chu Fung is an experienced designer. Chu Fung 是個具多年經驗的設計師。

CODE-A-MAZE 程式設計旗盤



Company 公司 : 4M Industrial Development Limited

Website 網頁 : <https://www.4m-ind.com/>

Awarded by 嘉許者 : **Mr. Richard SPICER**

Code-A-Maze is an elementary programming tool that leads kids to the adventure of coding world. The patented Snap-To-Code cards are used to program sequences, input commands and move the robot across the maze. The process intuitively develops kids' computational thinking without using a computer. Through the maze mats, kids can develop concepts of counting, direction and spatial perception. By using the grids on the maze mats, they can direct a robot to move in precise distances without physical measurement. The self-rotating technology shows no matter which direction the robot moves in, it always turns and faces the front!

Code-A-Maze 是一件初階的編程玩具，帶領小孩走進奇妙的編程世界。利用專利設計的 Snap-To-Code 系統編寫程式，孩子需要逐步計劃、輸入指令，以指引機械人穿越迷宮。從過程中，它可訓練小孩的計算思維而無需使用電腦，同時輕鬆培養小孩對數目、方向及空間的概念。透過方格遊戲墊，小孩可以讓機械人的移動距離更加精確，無需自行測量。機械人的自轉技術更令它可以保持向前移動，增添遊戲樂趣。

Designer 設計師
4M DESIGNERS 4M 設計師

Formed by a group of young designers with average of 4 years exposure to the toy market, engaged in integrated design of science, crafts, graphics and programming-related innovations. 由一班年輕設計師組成，均約逾 4 年玩具市場經驗，專注結合科學、手藝、平面和系統編寫程式相關的創新設計。



FLYING SUSHI KITCHEN 壽司機



Company 公司 :
RedwoodVentures Limited

Website 網頁 :
www.redwood-ventures.com/

Sushi balls floating in the air above the bamboo that makes it harder to pluck it out. Kids can pluck out the sushi ball by the chopstick and place it on the tray to serve before time-out, like a sushi chef. It's a fun game for kids to build their small hand muscle and develop hand-eye coordination.

遊戲設計利用空氣把壽司小球從竹子吹出來，使其在空中漂浮，再用筷子夾下，難度非常高！小孩可擔當成壽司廚師，用筷子夾下壽司，然後在限定時間前把它放在托盤上以完成訂單。從這過程中訓練小孩的小手肌及手眼協調能力。非常有趣味性的遊戲，同時能從過程中訓練小孩的小手肌及手眼協調能力。



Designer 設計師
Jason MIRANDA

A creative lead overseeing branding, packaging and marketing in the toys field since 2016. 自 2016 年以來，他一直專注於監督玩具行業的品牌、包裝和營銷管理。

CLP BOARD GAME 電力 GO GO GO



Company 公司 : People On Board Social Enterprise Ltd

Website 網頁 : www.pob.hk

Awarded by 嘉許者 : **Mr. Roger SWALES**

A great fun for family! Children can learn power saving and safety matters through this fun game.

讓小孩能輕鬆地學習節約用電及安全性問題的概念，適合一家大小一起玩！



Designer 設計師

Thomas Wong 黃頌行

Thomas is a social worker delegated to design fun and interesting board games for families in Hong Kong.

Thomas 是一名社會工作者，致力設計適合香港家庭的有趣桌上遊戲。

Designer 設計師

Laine Tam

Laine, a graphic designer with over 10 years of experience.

Laine 是一名擁有超過 10 年經驗的平面設計師。

FINALIST 入圍作品



MAISTO TECH R/C CYKLONE DRIFT

Designer 設計師 : **Paul TANG 鄧智恆**

Company 公司 : May Cheong Group Limited

Website 網頁 : www.maycheonggroup.com

TINBOT THE COLLECTIBLES 鐵寶奇盒



TinBot the Collectibles with magnetic puzzle figures designed as an integration of both toy and functional stationery, a beautiful tin box represents the past, present and future memories. The adorable robotic look attracts people in all ages and be your good buddy in daily life. It's the best childhood memory for kidult as well as the best creative toy for kids!

鐵寶奇盒內含集合玩具及功能性文具於一體的磁力創意玩偶，精美的鐵盒蘊藏了過去、現在和未來的種種美好事物。其可愛的機械人外型能吸引男女老少，成為您生活中的好伙伴。它是大朋友的童年回憶，同時也是小朋友的創意玩具！

Awarded by 嘉許者 :

Ms. Nicolette NAUMANN



Company 公司 : BIGBLOCK creation Website 網頁 : www.tinbot.com.hk



Designer 設計師

Lock LAI

Has over ten years of design experiences in home appliances, electronics, stationery gifts, toys, etc. and devoted to develop his own Hong Kong's original toy brand.

具十多年設計經驗，包括：家電、電子產品、文具禮品、玩具等；近年更致力發展自家香港原創玩具品牌。

JOURNEY: WRATH OF DEMONS 行者 - 群魔狂怒



Company 公司:
Marrow production

Website 網頁:
www.marrowproduction.com



The boardgame was inspired by one of the famous Chinese classical novels "Journey to the West". The characters and stories are redesigned with a brand new direction from the original. The game integrates with Asian culture, folklore, and the philosophy of Karama to express goods and kindness to increase the variables in the game. From the creative process to the finished product of "Journey", it fully presents the combined characteristic of the Chinese and Western design.

它是一套以四大名著為藍本創作的微縮戰棋遊戲。將《西遊記》中的故事及角色重新編寫和設計，為遊戲創造出一個有別於原著且奇幻無比的故事背景。把西方流行的桌上戰棋風格再結合中國傳說，藉此向西方傳揚中華文化及傳統價值觀，編寫出一套獨一無二的遊戲規則，破天荒將佛教的因果及善惡業報觀結合在遊戲之中，為遊戲添加變數和難度。



Designer 設計師
HO Hon 何瀚為

Ho Hon is a board game designer and also a professional miniatures painter; devoted in toys industry.
Hon Ho 是一名桌上遊戲設計師，同時亦是專注於玩具行業的微縮模型塗畫師。



Designer 設計師
Ray WONG 黃偉民

Ray Wong is a prototype sculptor and designer devoted in miniature sculpting, character design, styling and other various art creations with over 20 years of experience.
Ray Wong 是一位原型雕塑家和設計師，擁有 20 年的經驗，專注微型雕刻、角色設計、造型和其他各種藝術創作。

DICE CHESS 骰棋



Company 公司:
Orthodox Co. 正派遊戲製作公司

Website 網頁:
www.facebook.com/kcpoker



Dice Chess, an abstract strategy game with no story nor any game world settings, but only simply game rules. Utilizing the characteristics of the 6-sided dice, it added a new type of move called "Change", which different from the game rules of a classic chess-type game. By transferring pips from one dice to another, one can make surprise attacks.

骰棋 - 新世紀一個《純棋類遊戲》，它沒有故事背景，且沒有遊戲世界觀只有『玩法』。它運用了骰子六面的特性，在傳統棋類行法與勝負定義當中加入「變骰」在行棋佈陣中，骰子可以互相變化，創出其不意的殺著。



Designer 設計師
LEUNG Ka-Chu 梁家柱

Ever since 1990 started his career in game industry, he has worked as a game blogger, the chief game designer for an online game company and designed several war games and game cards.
由 1990 年創作遊戲至今，曾從事撰寫遊戲專欄、任職網絡供應商的首席遊戲設計師。先後設計出多個戰棋及遊戲卡。

JIGZLE® MOJI



Company 公司:Starlite Visual Communication Limited

Website 網頁:www.greentanet.com

Awarded by 嘉許者: **Mr. Gary MAN**

JIGZLE® moji is a series of DIY wooden puzzle figures with augmented reality mobile application. With a contemporary twist of wooden puzzle, you can assemble the figures without tools and then interact with special AR scenes. You can always find a moji matching your mood, no matter you are overwhelmed by workload, immersed in happiness like a princess, or fascinated by the oriental heroic stories. You can build your moji, play with your moji, and love your moji!

JIGZLE® moji 是一系列配備擴增實境手機應用程式的 DIY 活動人偶，無論您是身處沉重的工作壓力、沉醉於公主夢，或是崇尚東方的武士魂，都可以找到專屬您的 moji。一起拼 moji、玩 moji、愛 moji！



Designer 設計師

CHUNG Wing-Lam 鍾穎琳 • CHEUNG Yiu-Fai 張耀輝 • PAK Ka-Wah 白家華

Formed by a group of 3: Ball Cheung was majored in Mechanical Engineering in Product Analysis and Engineering Design; Missa Chung is a senior product designer majored in timepieces and fashion product design, while Kenneth Pak is a senior graphic designer engaged in product package design, reshape and display.

由 3 人組成：張耀輝主修產品分析及工程設計；而鍾穎琳現擔任資深產品設計師，主修時計及時尚產品設計；白家華則是一名資深平面設計師，從事平面設計及包裝設計，為包裝品重塑形象，以及設計店鋪展示。



FINALIST 入圍作品



INCREDIBUILD - STARWAR SERIES INCREDIBUILD - 星戰球大戰系列

Designer 設計師: **HE Jian-Zhu 何健柱 • CHEUNG Yiu-Fai 張耀輝**
Company 公司: Starlite Visual Communication Limited
Website 網頁: www.greentanet.com



MAGNETIC MARBLE RUN 垂直滾球

Designer 設計師: **Yan XU 徐欣 • Norah CAI 蔡依靜 • JJ CHAO 巢俊傑**
Company 公司: Magnet Limited
Website 網頁: www.magnet-ltd.com

BREAK THE COCOON – SPARKLING HONG KONG 2019

「破繭而出，閃耀香港」2019

A total of 23 awardees of HKSDA 2018 participated in the Designers' Inspiration Trip to Germany and the Netherlands for 8 days in February 2019. During the trip, awardees had the opportunity to learn from experienced professionals, broaden their business perspective and build up valuable business connection. It is expected that the upcoming BCSHK will create more exploration opportunities for the 2019 winners.

2019年2月，23位2018年度的得獎設計師遠赴德國及荷蘭，參加為期8天的「設計師啟發之旅」，透過與專業人士交流，擴闊視野，建立寶貴的人脈網絡。期望來年的「閃耀香港」會為2019得獎者創造更多探索機會。

DESIGNERS' INSPIRATION TRIP @ GERMANY AND THE NETHERLANDS

德國及荷蘭「設計師啟發之旅」

KARSTADT DEPARTMENT STORE



GRO DESIGN STUDIO



PHILIPS MUSEUM



AMBIENTE, FRANKFURT



VAN GOGH MUSEUM



MUSEUM ANGEWANDTE KUNST



DESIGN ACADEMY EINDHOVEN



— HONOR OF SOLUTIONS 2019 - INTELLIGENT PRODUCTS FOR KITCHEN AND HOUSEHOLD

— GERMAN DESIGN AWARD



KITCHEN 廚房用品
CLIP CLAP

Designer 設計師 : **Eduardo AALESSI • Kingdy LI**

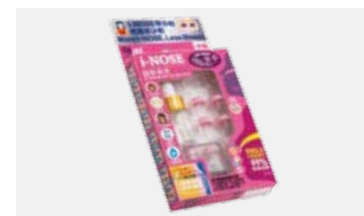
Company 公司 : area plus limited



DINING & PARTY 餐宴派對
T-RING TEAPOT

Designer 設計師 : **Zec CHAN 陳志梁 • Carlos LUO 羅沛帆 • Maggie LAU 劉映雪 • Ling WANG 王菱**

Company 公司 : JEEP INNOVATION LTD.
尋印創意有限公司



WELLNESS & PERSONAL CARE
保健及個人護理
I-NOSE INVISIBLE NASAL MASK

Designer 設計師 : **Hay-Tung, Casey LAM 林晞彤**

Company 公司 : 5C Limited 五彤有限公司



CORPORATE PROMOTIONAL
GIFTS 企業宣傳禮品
JOURNEY TO HAPPINESS

Designer 設計師 : **Mike WONG 黃嘉慧 • Shayne CHAN 陳安善**

Company 公司 : LLAB Design Ltd.

Fancy our awardees?! You can be one!

Here's your chance. Grab it and own it!

想成為我們的得獎者?! 您一定可以! 機會就在眼前, 找緊屬於您的機會!



Precious moment of
Inspiration Trip
啟發之旅珍貴一刻



CONCEPTUAL GROUP 概念組別

CREATIVE INDIVIDUAL DIVISION
獨立創意組

STUDENT DIVISION
學生組

HKSDA PROJECT MANAGEMENT TEAM'S PREFACE 「香港智營設計大賞」項目監管的話

This year, a "Home and Houseware" theme was selected for Conceptual Group (Creative Individual Division and Student Division). Beyond our expectation, there's a surge in the participation of student group with more than 200 entries. Thus, we would like to extend our sincere gratitude and appreciation to our collaborating and supporting academies. We treasure all local design talents' career development and given opportunity to nurture and introduce them to experienced professionals in the market.

今年，我們為概念組別（獨立創意組及學生組）選擇了「愛、家居」為主題，而當中學生組的參與人數激增，收到近 200 份作品。為此，我們衷心感謝支持我們的學院。我們重視所有本地設計人才的出路，竭力培養及引薦他們到業界發展。



ROGER NGAN

Member, HKSDA Project Management Team
General Committee Member, HKEA

顏志永

「香港智營設計大賞」項目監管代表
香港出口商會理事

KIN SMART PILL DISPENSER 家健智能藥箱



'KIN' is a smart pill dispenser integrated with an online pill management platform for users and caretakers. It has 4 key features: 1) automatic dispense (auto sort) drugs, 2) adherence record, 3) drug inventory management and 4) smart notification. It is simple to use; firstly, enter the prescription of the dosage; secondly, load the pills into the assigned cartridge, then the dispenser will remind user and prepare the pills needed with the press of a button.

「家健智能藥箱」為用家提供最安全、方便、快捷的服藥體驗。這藥箱有四大功能：第一，依照處方自動發放藥物；第二，服藥記錄；第三，藥物管理系統；第四，智能服藥提示功能。使用方法很簡單：首先，把藥物放進配置容器內。然後，輸入藥方及服用指示。每次要服藥的時候，藥箱會提醒用家並為用家準備須服用藥物。



Email 電郵: oswin@kinhealthcare.co/ johnny@kinhealthcare.co



Designer 設計師

Oswin YEUNG Hin 楊灝 • Johnny WONG Tsz-Hang 黃子亨 • Andy TAM Ka-Long 譚家朗

A group formed by architecture graduate passionate in innovative product design, an experienced engineer specialized in mechanical and automation engineering sector and an electronic engineering graduate with great experience in electronics development.

一個由對創新產品設計有很深興趣的建築設計畢業生、從事機械和自動化工程領域多年的工程師，及對電子產品研發有豐富經驗的電子及計算工程碩士畢業生組成的團隊。

E-PAPER RED BANNER



Email 電郵：
Matthew.chu.design@gmail.com

Chinese red banner "Fai Chun" is a traditional decoration during the Lunar New Year, meaning of good luck. However, an enormous festival waste will be generated every year, as people will throw away it after use. To address this issue, this 'E-paper Red Banner' is designed to reuse with content edit function. It can also be used to display photos and visual images after Lunar New Year.

中國「揮春」是農曆新年期間的傳統裝飾；然而，節日之後會被棄掉而產生節日垃圾。電子揮春是可重複使用，且內容可以依照需要而更改。在農曆新年過後，它還可作為裝飾顯示照片或圖像。



Designer 設計師
CHU Man-Ho 朱文豪

Working in product design field for more than 8 years, specialized in the field of electronic consumer product.
從事產品設計超過 8 年經驗，專注於電子產品設計。



TIMELESS 無盡



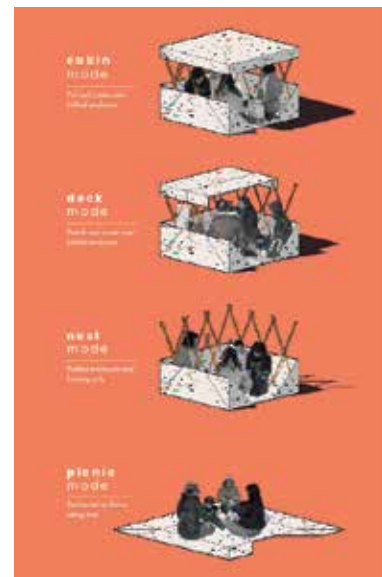
Designer 設計師：**Niki LEUNG Mei-Yin**
Email 電郵：
nikileung.design@gmail.com

"Depression engulfs time, like an endless black hole."

Designed as using this clock to express the situation of depressed people. Crowded marking on hour and minute hands represent the far-flung moment, and it is like being trapped in a bottomless black hole. A lead ball in the centre of clock symbolises the depressive patients have been revolving around the darkness.

「抑鬱吞噬着時間，像黑洞一樣無止盡的。」

設計以此時鐘來表達抑鬱病患的處境。時盤及分盤上密集的刻度，代表漫長時間的流逝，外型像黑洞一樣深不見底，而中間代表秒針的鉛球，象徵著沉重的抑鬱患者圍繞黑暗世界在轉，沒完沒了。



SUNDAY HOME 日家



Email 電郵：
maya@greenawayarchitects.com.au

'SUNDAY HOME' is a portable and re-usable enclosure designed for foreign domestic workers in Hong Kong to spend their day-off in public places. It's a more durable and comfortable alternative compared to the makeshift cardboard shelter commonly used. It provides better weather and privacy protection to its users, while presenting a more organised and less-cluttered appearance to the public.

「日家」是一個可攜帶及重複使用的居所，給外籍傭工在公共場所度過假日。目標是為使用者提供對天氣和私隱更好的保護，及對公眾呈現一個更有條理和簡潔的外觀。



Designer 設計師
Maya WONG Ho-Mei 黃皓薇

Currently works for an architecture practice and engages in a diverse range of projects - ranging from multi-unit development, heritage re-development, to furniture and product design - with the intention to create healthy and comfortable spaces for everyone, using sustainable practices.
目前為建築設計師，參與多種項目，包括住宅設計、文化遺產重建、家具及產品設計。



ECO UMBRELLA HANDLE WITH CONTAINER 環保遮頭保寶



Designer 設計師：**WONG Foon-Tai 黃寬泰** •
CHAN Shu-Pun 陳樹斌
Email 電郵：
bandworkshop@gmail.com

An 'eco umbrella handle' with inbuilt space to put plastic bags inside for use. It fits most of the umbrella with screw-type handle and convenient to use in raining days in and out the premises.

「環保遮頭保寶」內藏膠袋容器，適合收藏任何膠袋作雨袋或防塵袋用，方便又環保。



PORTAL



Designer 設計師 : **CHU Man-Ho 朱文豪**
Email 電郵 : Matthew.chu.design@gmail.com

'Portal' is a router with its own extender which enhances the network performance by creating powerful Wi-Fi signal to link with other smart home devices. The extender has inbuilt battery and can be placed anywhere at home.

'Portal' 是附有擴展器的路由器，通過創建強大的 Wi-Fi 信號提高網絡性能，與其他智能家居設備連接。擴展器內置有充電電池功能，可以放置在家中任何地方使用。



BIRDIE DOOR STOPPER



Designer 設計師 : **LEE Sung-Kei 李崇基**
Email 電郵 : c4grey@yahoo.com

Simple design with multiple colour combo set for choice. The unique slope design and the non-slippery base provide an ideal gripping power to the door.

簡單設計，有多種顏色組合可供選擇。獨特的斜坡門塞設計和防滑底座加強門的抓地力。

TURN 180



Designer 設計師 : **LEUNG KONG Kit-Ying 梁鄺潔瑩**
Email 電郵 : saladkit@yahoo.co.jp

Playing with two-way design on fonts. Do a 180 degree turn, another Chinese character with different meaning will be shown. Different angle presents a different meaning!

雙向設計字體，只要上下顛倒來看，原本的漢字就會變成另外一個字及意思！同樣一張圖，換個角度看，結果會大不同！

EBOTTLE
電動自行車轉換器

'EBottle' is a converter in bottle shape that can convert traditional bike into electric bike in a few seconds. The riding power will be detected and will automatically convert into extra power when needed. It is composed of an induction motor and a battery with carbon fiber shell. If the bike is going down slope, the generator will direct the power safe back to the battery.

「電動自行車轉換器」是水瓶形狀的轉換器，由感應電機、電池和碳纖維外殼等組成。它可以在幾秒鐘內將你的傳統自行車轉換為電動自行車。當系統感覺到用戶沒有足夠的騎行力量時；「電動自行車轉換器」會為用戶提供額外的動力。如果自行車正在下坡，發電機會把節省的電力儲到電池內。



Designer 設計師
HEUNG Tsz-Hang 鄉梓衡
With 3 years design experiences, specialized in sports gear, furniture and consumer electronics designs.
擁有 3 年的設計經驗，並專注於運動裝備、家具和電子產品設計。

Email 電郵 : heungmarco@hotmail.com
School 學院 : Technological and Higher Education Institute of Hong Kong

EASY BANDAGE 順手膠布



Email 電郵：
oktiffany7@gmail.com

School 學院：
Hong Kong Design Institute

Applying wound bandage can be difficult without other's help. Portable "Easy Bandage" is designed to cover small wound by one hand. It looks like a compact and fit a hand size. It will collect wrappings automatically, along with a lid to prevent bacteria.

當沒有其他人的幫助時，要貼膠布時可能很困難。「順手膠布」的設計可令用家單手使用，處理小型傷口。它看起來像一個粉盒，適合手部尺寸，方便攜帶。另外，更設有蓋子可以防止細菌滋生，而且同時能夠自動收集包裝紙。



Designer 設計師：
CHEUNG Sui-Wa 張萃華

A year 2 student studying Higher Diploma in Product Design.
一名產品設計高級文憑的二年級生。

LAMOIST



Email 電郵：
lavenderleungching@gmail.com

School 學院：
Technological and Higher Education Institute of Hong Kong

It is a combination of lamp and humidifier. The energy released by the humidifier can be used for lighting up the light bulb. The reflection of light ray through water and steam can show the beauty of nature.

這是燈和加濕器組合而成的。加濕器釋放的能量可用於點亮燈泡，此外光線通過水和蒸汽的反射可讓您看到大自然的美。



Designer 設計師：
LEUNG Ching 梁靜

A product design student devoted in simple and sustainable design.
一名修讀產品設計學生，專注於簡單及可持續設計。



FOLDABLE MAGNETIC REUSABLE STRAW 可摺式磁力環保吸管



Designer 設計師：**YEUNG Hoi-Yat 楊海溢**
Email 電郵：
maggieeeee@gmail.com
School 學院：
Technological and Higher
Education Institute of Hong Kong

It's made of recyclable soft plastic, easy to clean and dry quickly, in order to avoid accumulate bacteria and mold. Able to carry it everywhere with its foldable design. The magnetic design to ensure avoid leaking and no air pockets will caused. Simply touch the two endings with 'tick' sound and it's ready to be used.

使用了可回收再造軟膠製成，易於清洗及快乾，令使用者能更安心使用，不需擔心吸管内積聚污染或滋生霉菌。其可摺式設計使吸管易於攜帶；磁力設計確保飲用時不會滲漏及不會出現氣泡，簡單地合上吸管頭尾兩端便可使用。



SHARING BOTTLE



Designer 設計師：**Persy LO Pui-Sze 羅佩思**
Email 電郵：
persylo1999@gmail.com
School 學院：
Hong Kong Design Institute

This "Sharing Bottle" with one-way straw is designed to address the hygiene matter of bottle sharing. The bead inside the straw is blocked the entrance of the straw. When drinking, bead goes up and allows liquid to pass through. Then, bead will fall down and block fluid flow back when stopped drinking.

一些細菌可以透過大家的唾液互相傳染，導致飲用者生病。這個水瓶的飲管為單一的管道，有效阻止被飲用過的水倒流回水瓶中，隔絕細菌，以解決瓶子共享的衛生問題。

SMARTOT



Designer 設計師：**LIU Wai-Wa 廖慧華**
Email 電郵：
liuwaiwa99@icloud.com
School 學院：
Technological and Higher
Education Institute of Hong Kong

An automatic flower pot provided a way to cultivate plant indoor. It has an electrochromic glass to prevent the plant from being overexposed to the sun and a mini dehumidification system that collect water from the air to water the plant. It is an ideal alternative to provide lighting for the plant's growth on a cloudy or rainy day.

SMARTOT 是一個智能花盆協助於室內培養植物。玻璃在陽光過於猛烈的時候，可以變色以防止植物過度暴晒。而花盆的底座有一個小型吸濕系統，可以從空氣中收集水分來給植物澆水，而花盆頂端的 LED 燈能在陰天或多雲的日子中給植物提供足夠的光照。



POTLID HOLDER 湯蓋神器



Designer 設計師：**Raymond LAU Wai-Man 劉蔚旻**、**Terence NG Ting-Keung 吳定強**、**Ray TANG Long-Kit 鄧朗杰**
 Email 電郵：mwlpo2024@hotmail.com
terenceng2001@gmail.com
raytanglongkit@gmail.com
 School 學院：The Hong Kong Polytechnic University

PotLid Holder is designed to avoid scald for the diner who are trying to place a hot pot lid on table in reverse. It has 5 highlights: 1) draws the pot lid and holds it slightly tilted by occupying narrow space to save the space on the table; 2) offering stably stand to lid rest, and easily re-cover on the pot without directly by hand, to avoid scald; 3) with liquid droplets collection; 4) the suction cup is fit for multi-size of pot lid and 5) is heat-resistant and waterproof material. It is a fashionable and convenient design.

「湯蓋神器」是專為家庭或火鍋愛好者而設計。它能夠避免用餐者在打開並放置湯蓋時，因接觸湯蓋表面而燙傷：1) 它緊緊吸住湯蓋，接近垂直地放置，減少使用飯桌空間；2) 湯蓋穩定置於蓋座。盛湯後若要將蓋放回煲上，復原動作直接簡單，過程亦無需用手接觸蓋面；3) 湯蓋傾斜放置時，倒汗水自動收集；4) 吸盤設計，適用於所有大小的湯蓋；5) 採用防熱及防水物料。時尚廚具，簡單方便。



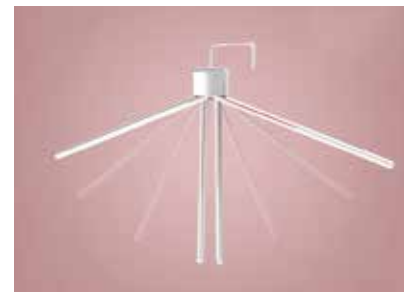
REIKI



Designer 設計師：**CHAN Ka-Hung 陳嘉鴻**
 Email 電郵：isaacchan922@gmail.com
 School 學院：Technological and Higher Education Institute of Hong Kong

'Reiki' combines aromatherapy, dehumidifier and coat hanger all-in-one. The shapes imitate the plant morphology and behavior to add a natural touch into our daily lives. The inspiration comes from transpiration – water absorbed from the soil, travel through the stem, and finally evaporate from the leaves. 'Reiki' is made into a trunk shape, branches are hangers and aromatherapy steam nozzles. When hanging the clothes, it can absorb the scent of fresh flowers just to keep you pleasant and relaxed all day long.

「Reiki」香薰保濕掛衣架模仿植物形態及行為，加入自然氣息，將大自然的奧妙融入生活之中。設計靈感來自蒸騰作用 - 植物吸收土壤中的水份，走遍全身，最後於葉子氣孔蒸發。設計師將「Reiki」打造成樹幹形狀，枝節是衣架也是香薰蒸氣噴嘴。用家在掛起心愛衣物的同時，衣物又能沾染自然清新的草本花香，令您整天都能保持愉悅放鬆的心情。



AHANGER



Designer 設計師：**Chi Ho WONG 黃梓豪**
 Email 電郵：mromgabc@gmail.com
 School 學院：Hong Kong Design Institute

'Ahanger' is made of stainless steel, a work of design and creativity with smooth in shape conveniently drying clothes. The practical design allows the user to control the opening and closing of the hanger through the movable component.

傾斜衣架是設計和創意兼備的作品，該衣架特色在於傾斜會較快速乾衣，讓用家們能更輕鬆地晾曬衣物。



DUALL



Designer 設計師：**YIU Sau-Ling 姚琇齡**
 Email 電郵：catina-03089@hotmail.com
 School 學院：Technological and Higher Education Institute of Hong Kong

'DUALL' is an intelligent and futuristic water faucet with IOT technology. Under a designed household water cycle steam, it provides a smarter approach to monitor water usage and helps to reduce household water wasting.

[DUALL] 是個系統化的產品，用於創建智能家庭用水網絡，以識別不同的廢水來源，並考慮可行的方法來重複使用水。同時，它提供了更智能的方法來監控住宅用水，採用先進技術，用戶可以通過手機設備中的應用程式監控和獲取用水數據。



DEFEND VS DEFEND



Designer 設計師：**LEUNG Hei-Lun 梁熙麟**
 Email 電郵：alanlun521@gmail.com
 School 學院：Hong Kong Design Institute

A game for two players. They must defend the city by taking control the launch pad to repel the monster invader. Enjoy the game and have fun !

雙人一起玩的遊戲，控制發射台的方向把怪獸擊退，享受遊戲樂趣！



STAIR CHAIR



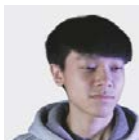
Designer 設計師 : **PANG Lok-Man 彭樂雯**
Email 電郵 : ltfcpanglokman@gmail.com
School 學院 : Hong Kong Design Institute



The "Stair Chair" is designed for everyone with different height, able to sit together at a high bar table comfortably. It has three different height foot steps, so you can adjust the height of the chair for you to sit.

「Stair Chair」是為每個不同高度的人而設計，讓大家能夠舒適地圍著高桌子一起坐。椅子有三種不同的腳踏高度。需要時轉動椅子，可轉換成合適的腳踏高度。

M-TAINER 萬盒



Designer 設計師 : **Donald JIM Ho-Fung 詹浩鋒**
Email 電郵 : donaldjim1999@gmail.com
School 學院 : Hong Kong Design Institute

The design aims to help managing the storage of the silverware or cutlery. The container can be disintegrated into flat parts for easy cleaning and storage. Also, users are able to arrange the setting combination in accordance with their own needs.

這個設計是幫助您更輕鬆地管理收納銀器或餐具。它可以拆散成扁平部分，易於清潔和收集，亦可以自由地組合成自己所需的要求。

SPONSORING & SUPPORTING ORGANIZATIONS

贊助及支持機構

ORGANIZER
主辦機構



MAJOR SPONSOR
主要贊助機構



COLLABORATING ACADEMY
協辦學院



CO-PARTNERS - TOYS & GAMES
合作伙伴－玩具及遊戲產品



SPONSORING & SUPPORTING ORGANIZATION
贊助及支持機構



VENUE SPONSORS
場地贊助



SILVER SPONSORS 銀贊助機構



SUPPORTING ACADEMIES & DESIGN ORGANIZATIONS 支持學院及設計機構



SUPPORTING TRADE ORGANIZATIONS 支持商會



Disclaimer: The Government of the Hong Kong Special Administrative Region provides funding support to the project only, and does not otherwise take part in the project. Any opinions, findings, conclusions or recommendations expressed in these materials/events (or by members of the project team) are those of the project organizers only and do not reflect the views of the Government of the Hong Kong Special Administrative Region, the Communications and Creative Industries Branch of the Commerce and Economic Development Bureau, Create Hong Kong, the CreateSmart Initiative Secretariat or the CreateSmart Initiative Vetting Committee.

免責聲明：香港特別行政區政府僅為本項目提供資助，除此之外並無參與項目。在本刊物／活動內（或由項目小組成員）表達的任何意見、研究成果、結論或建議，均不代表香港特別行政區政府、商務及經濟發展局通訊及創意產業科、創意香港、創意智優計劃秘書處或創意智優計劃審核委員會的觀點。



ACKNOWLEDGEMENT & PROJECT TEAM

鳴謝及項目團隊

SPEAKERS 講者

Mr. Brian CHAN, 陳浩然先生
Feaspec Optical Ltd.

Ms. Carol CHAN, 陳嘉麗小姐
Co-Founder of Cheeselon Laboratory Ltd.

Mr. Stanley CHEUNG, 張偉文先生
Managing Director of Gift Concept Products Ltd.
美意禮品有限公司董事

Mr. Paul LAM, 林振國先生
Founder of Ten Stationery Ltd
Ten Stationery Ltd. 創辦人

Ms. Comma LEUNG Man-Wai, 梁雯蕙小姐
Mosi Mosi Design Ltd.

Mr. Gray LEUNG, 梁慶紀先生
Creative Director of Graphic Guides Design Co.
設計特區創意總監

Mr. Raymond LEUNG, 梁健雄先生
Vice President (Sales & Client Services), Cherrypicks Ltd.
and Founding Director of International Affairs,
HongKong O2O E-commerce Federation Ltd.
創奇思副總裁〈銷售及客戶服務〉及
香港 O2O 電子商務總會 創會國際事務部總監

Mr. LI Sung-Shan, 李崇山先生
Thinkthing Studio Ltd.

Mr. Tommy LI, 李永銓先生
Creative Director of Tommy Li Design Workshop Ltd.
李永銓設計有限公司創作總監

STUDENT SPEAKERS 學生講者

Mr. Luke YUNG Tsz-Chiu, 翁梓超先生
Hong Kong Design Institute

Yvonne LEE, 李綺文
Director
總監

Penny CHEUNG, 張葆櫻
Senior Officer
高級主任

Allan HUI, 許國樑
Manager
經理

Grace TSANG, 曾琬鈿
Officer
主任

Phoebe LI, 李侑汶
Assistant Manger
助理經理

Mani YAU, 邱曼怡
Executive
助理



Adrian CHOU, 周德基

Aggie LEE, 李潔珊

Sandy LAU, 劉佩萍

Vicky CHEUNG, 張潔怡

Matthew CHUI, 崔敏誠

Wilson SIU, 蕭家榮

Jessica TSANG, 曾清佃

Kirsty NG, 伍凱敏

Ray YEUNG, 楊瑞貞



MANAGEMENT: Axiom Design Partnership Ltd. 艾森設計顧問事務所

* 排名不分先後 IN NO PARTICULAR ORDER



HONG KONG
SMART DESIGN
AWARDS



ADDRESS 地址

The Hong Kong Exporters' Association
Room 924, Star House, 3 Salisbury Road,
Tsimshatsui, Kowloon, Hong Kong

香港九龍尖沙咀梳士巴利道三號星光行924室

TELEPHONE 電話

+852 2730 2029

+852 2730 9851

FAX 傳真

+852 2730 1869

WEBSITE 網址

www.SDAwards.org.hk

EMAIL 電郵

enquiry@SDAwards.org.hk

